



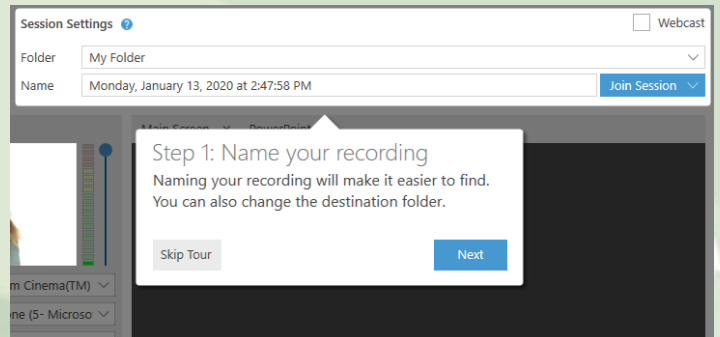
hosted.panopto.com/

Sign in

☒ Remember me

Open Panopto and log in to your account. If the program is logged in under another user, be sure to log out and then log back in. This will help ensure your recordings save in the appropriate location.

After successfully logging in, you will be prompted to complete an introductory tour which highlights several key functions of the software.



Audio, Video, and Content Capture Settings

Prior to pressing the record button, you will want to verify your capture settings!

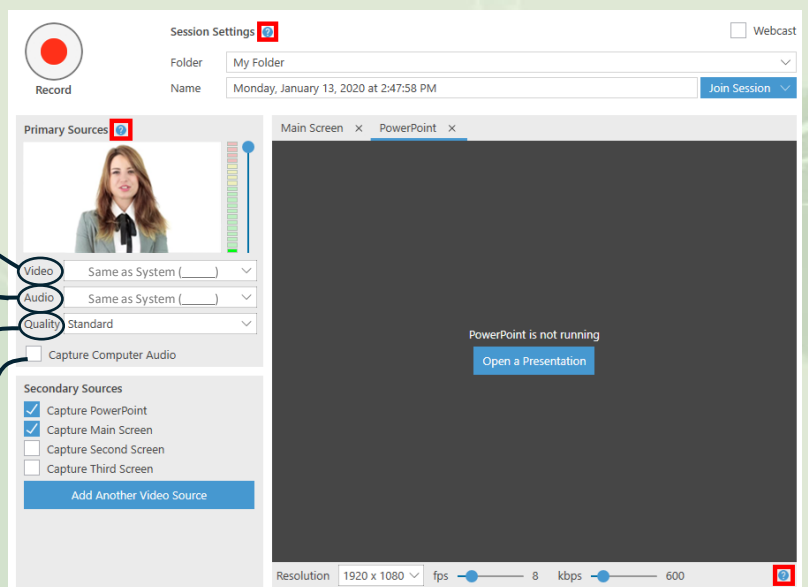
To record video of a presenter, you will need to have a video device selected. Select the appropriate device from the drop-down menu.

To capture lecture audio, you will need to have an audio source selected. Select the appropriate device from the drop-down menu.

Test audio device by speaking into microphone. The audio meter will display input levels if the selected device is working properly. It may be necessary to adjust the input level if it is too low or too high.



Changes the quality of a recording, higher quality will increase overall file size and bandwidth needed to stream.



Selecting "Capture Computer Audio" enables the user to record the audio from videos and other media played on the host computer.