

Healthy Brain Aging in Colorado

THE PROBLEM

- Alzheimer's Disease (AD) is increasingly common in the aging U.S. population. **However**, there are too few dementia specialists and dementia is often identified too late.
- Early and accurate diagnosis:

Saves millions in Colorado healthcare expenses

Improves treatment of dementia

Raises patient and caregiver quality of life

May best allow for new, disease modifying medications

OUR APPROACH

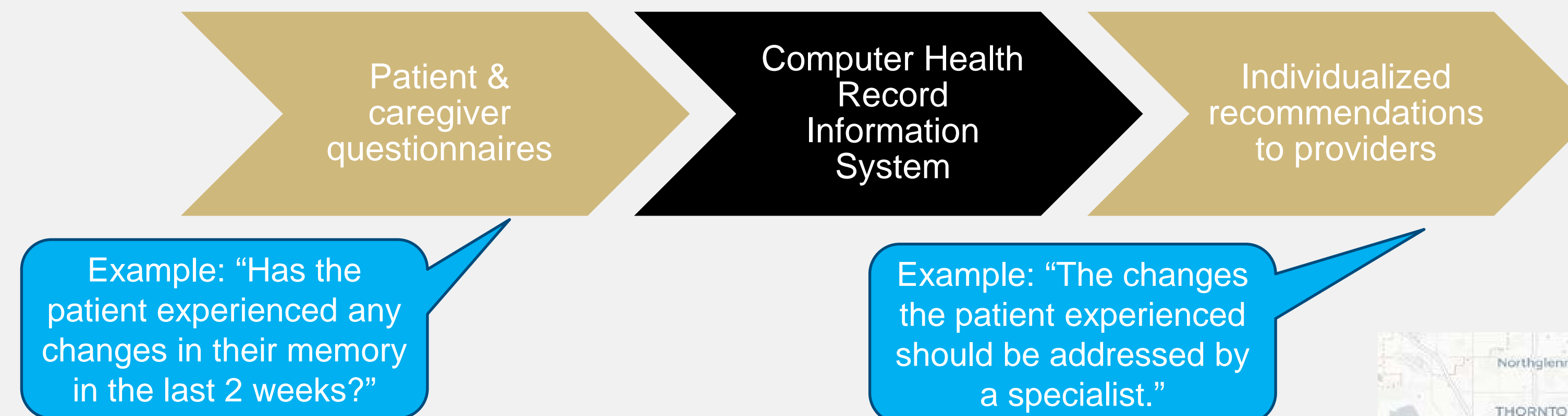
HEALTHCARE ACCESSIBILITY

COMMUNITY ENGAGEMENT

ADVANCED DIAGNOSTIC TOOLS

WHAT WE DO

1. INCREASING HEALTHCARE ACCESSIBILITY USING ONLINE SURVEYS:

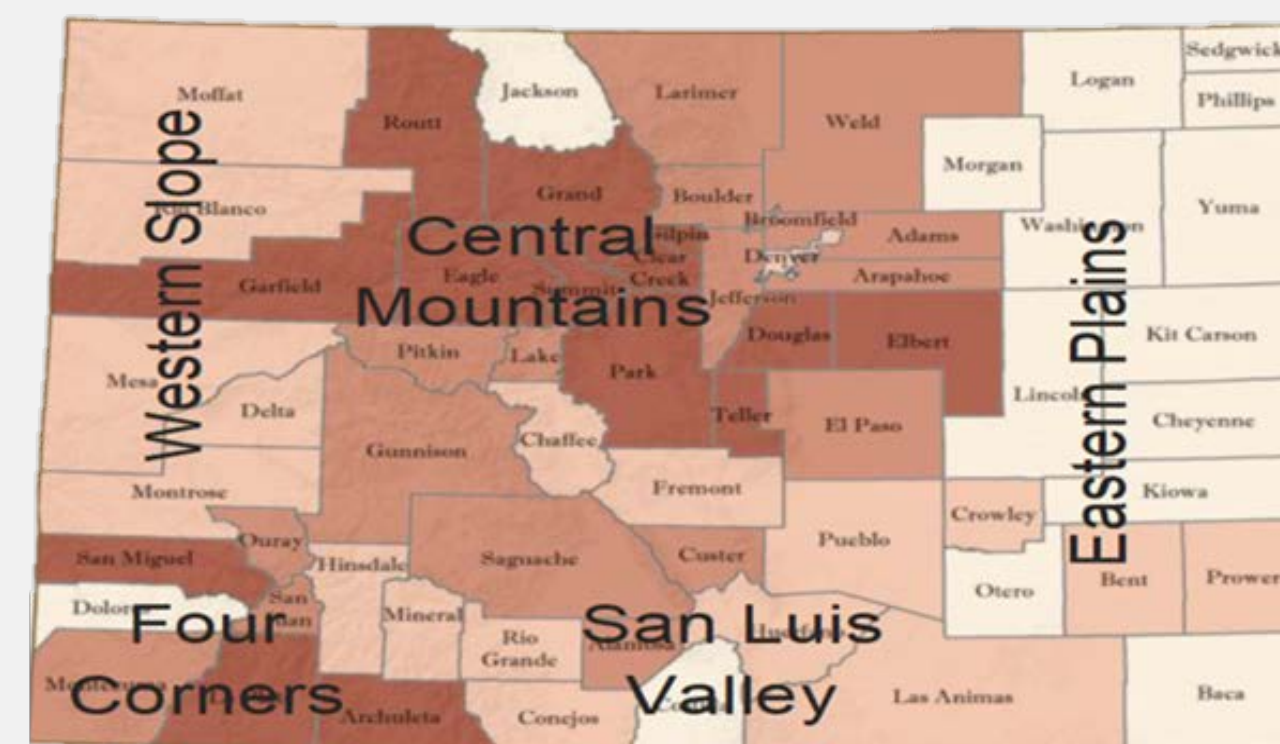


Example: "Has the patient experienced any changes in their memory in the last 2 weeks?"

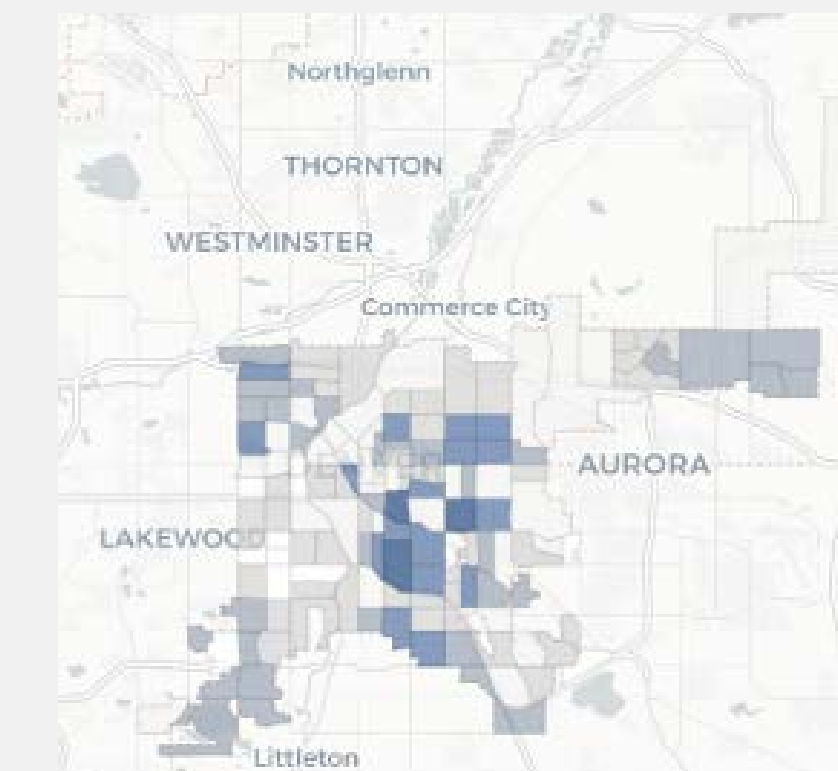
Example: "The changes the patient experienced should be addressed by a specialist."

2. COMMUNITY ENGAGEMENT:

CONTEXTS	Who are we serving?
PARTNERSHIPS	Which organizations and group dynamics are involved?
RESEARCH	Does our work reflect local and cultural beliefs?
OUTCOMES	Improving health and creating long-lasting systemic change

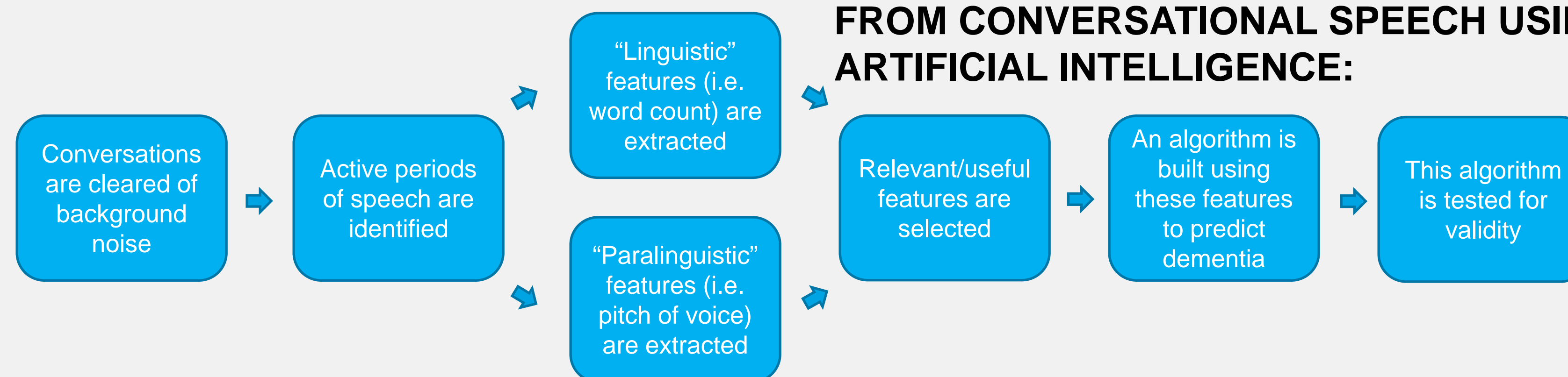


Colorado Counties by age increase (darker counties have greater increase in older adults)



Hispanic/Latino populations in Denver (darker indicates higher percentage)

3. CREATING TOOLS TO DETECT DEMENTIA FROM CONVERSATIONAL SPEECH USING ARTIFICIAL INTELLIGENCE:



WHAT'S NEXT?

- HEALTHCARE ACCESSIBILITY:** Work with diverse sample of Colorado primary care providers to implement evaluations into clinical standard of care.
- COMMUNITY ENGAGEMENT:** Maximize partnerships by gathering and implementing community representative feedback on existing systems.
- ADVANCED DIAGNOSTIC TOOLS:** Validate AI techniques by testing the algorithm on healthy individuals prior to patients.

SUMMARY

Improving access to advanced dementia care in Colorado supports healthy aging in our diverse communities across the state and saves millions in associated healthcare costs.

FURTHER READING

- <https://csandlab.org/>
- <https://medschool.cuanschutz.edu/alzheimer>
- <https://medschool.cuanschutz.edu/alzheimer/community/african-american-alzheimer-s-advisory-council>
- <https://www.alz.org/>
- "Lecanemab in Early Alzheimer's Disease" in *The New England Journal of Medicine*

