

**PN 20-159784 | Perinatal Replace Clean Steam Generator**  
**Type of Original Notice: Request for Bids**  
**Notice Number: 20-159784**

---

July 26, 2021

**ADDENDUM 1**

**SCOPE AND CLARIFICATIONS:**

1. Steam Generator Schedule calls RB90V1624. The manufacturer recommends model RB45V1018. Please confirm which model number to use.  
**MEP Response – Provide Specified Model RB90V1624**
2. In February, lead time was 13 weeks. We have requested confirmation on current lead time but it has not reduced. Please advise is completion date is flexible and can be extended.

**MEP Response – We understand the critical path of the project is based on contract approval and material procurement from the specified manufacturer.**

3. Please provide contact for Siemens.

**MEP Response – We understand the critical path of the project is based on**

**Duane Ranski**

**Siemens Industry, Inc.**  
**7810 Shaffer Parkway**  
**Littleton, CO 80127, USA**  
**Tel.: +1 973 703-2365**  
**[duane.ranski@siemens.com](mailto:duane.ranski@siemens.com)**

**ADDITIONAL INFORMATION:**

- **Photos Attached.**

**END OF ADDENDUM**





ARMSTRONG STEAM GENERATOR  
MODEL NUMBER: \_\_\_\_\_  
SERIAL NUMBER: \_\_\_\_\_  
DATE: \_\_\_\_\_  
INSTALLER: \_\_\_\_\_  
OPERATOR: \_\_\_\_\_  
PRESSURE: \_\_\_\_\_  
TEMPERATURE: \_\_\_\_\_  
PSI  
FPM

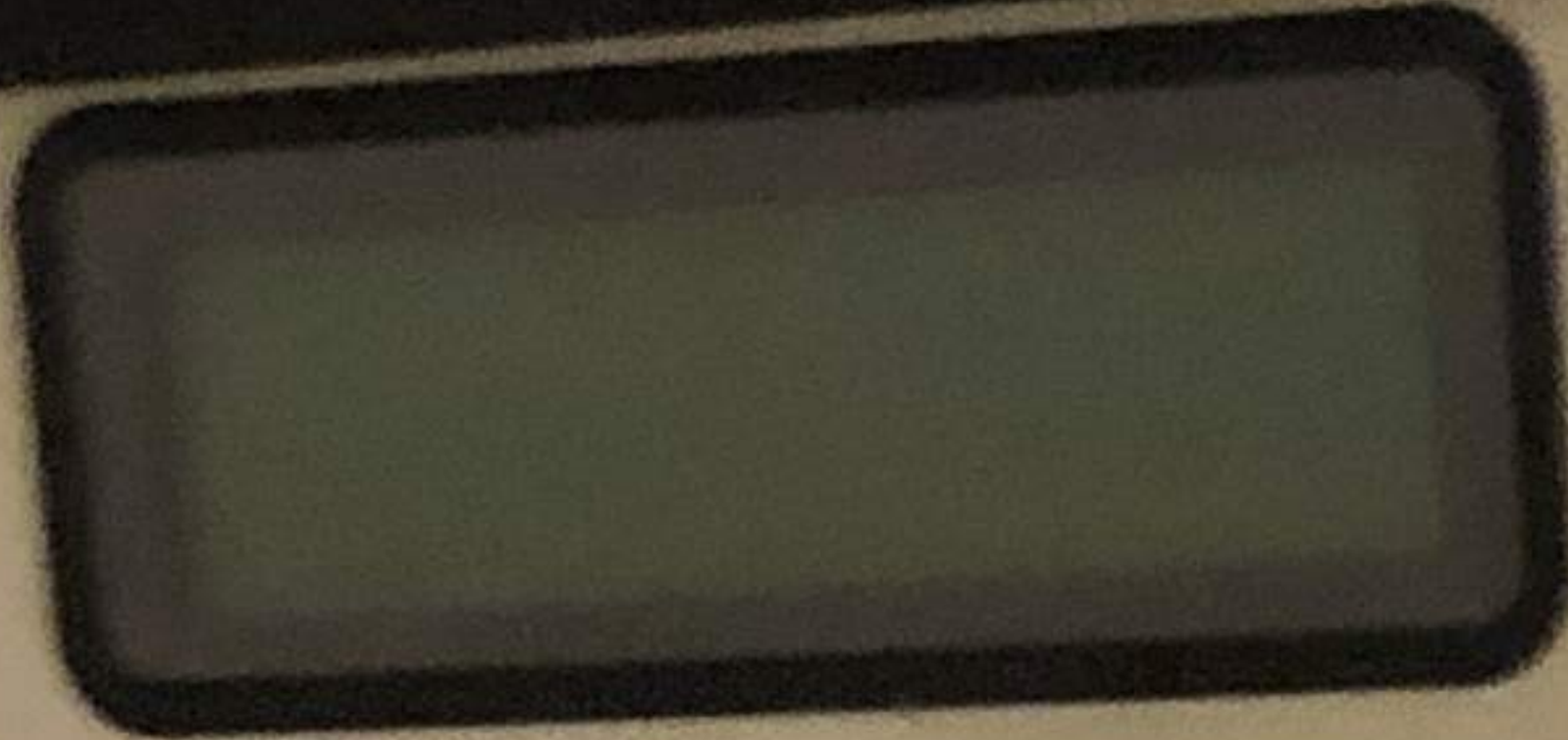
**Armstrong**  
875 MAPLE STREET  
THIRD FLOOR, WILMINGTON, OHIO 45390  
937.773.1413

U.N.



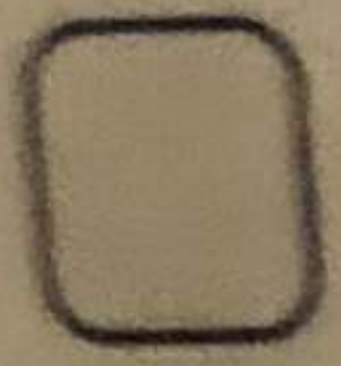
CSG-1

LOG #

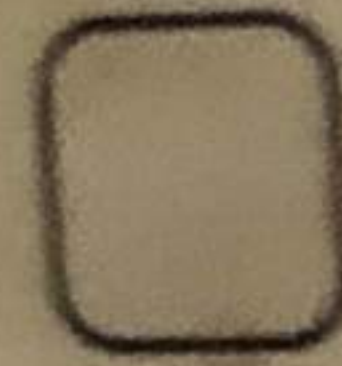


Pressure/PSI

Fault



Next



Select



Alarm  
Silence

Power On

Low Water

High Pressure

Water Feed

High Water

Low Pressure

Blow Down

Optional Input/Output

120 VOLTS



# UNFIRED STEAM GENERATOR

MODEL NUMBER

RB90V1624

SERIAL NUMBER

54326

SIZE

24 X 48

GALLON CAPACITY

90

VESSEL MAX. W.P.

125

PSI WATER

50

PSI STEAM

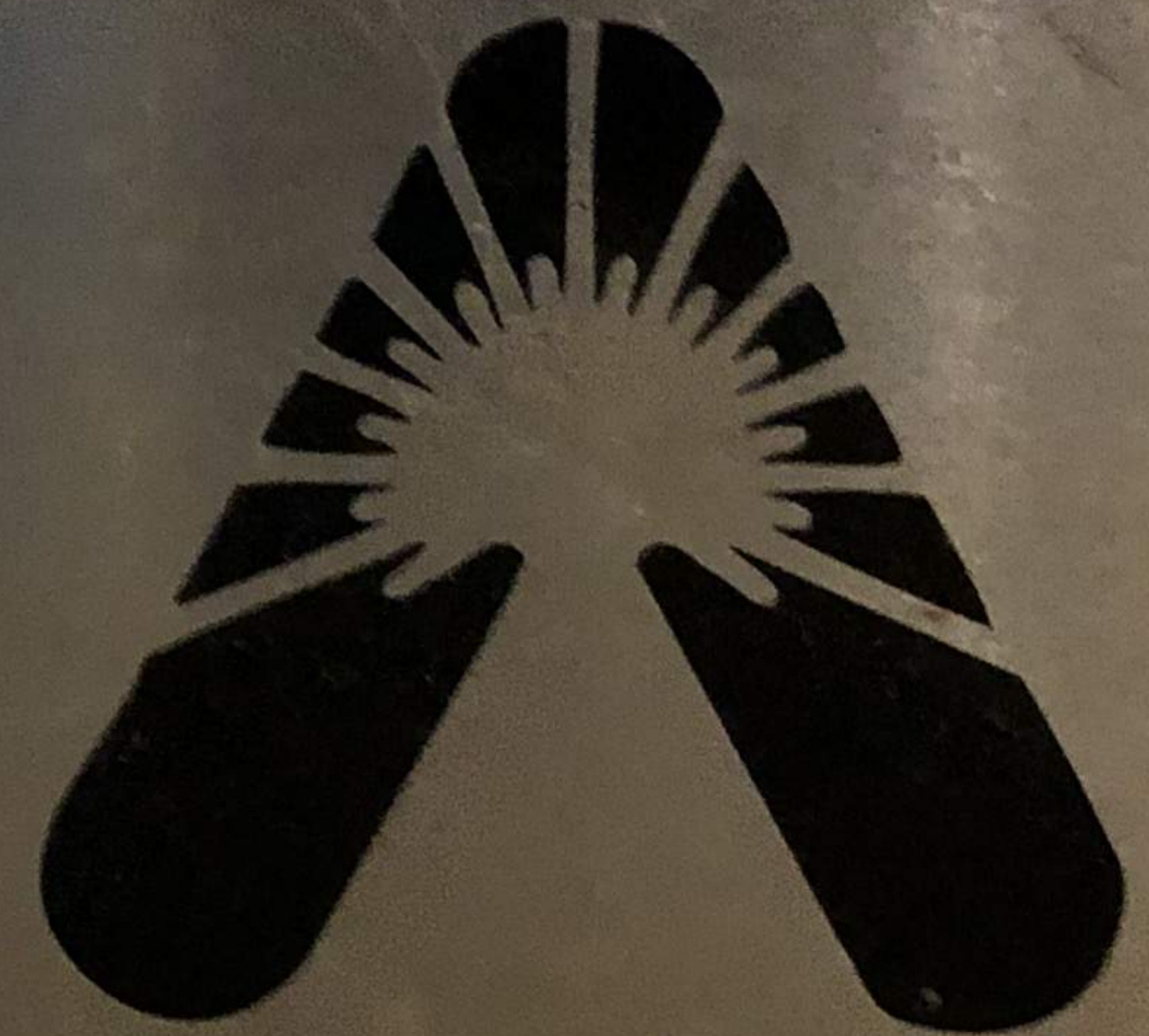
COIL MODEL #

1624ASP

RELIEF VALVE SET

35

PSI

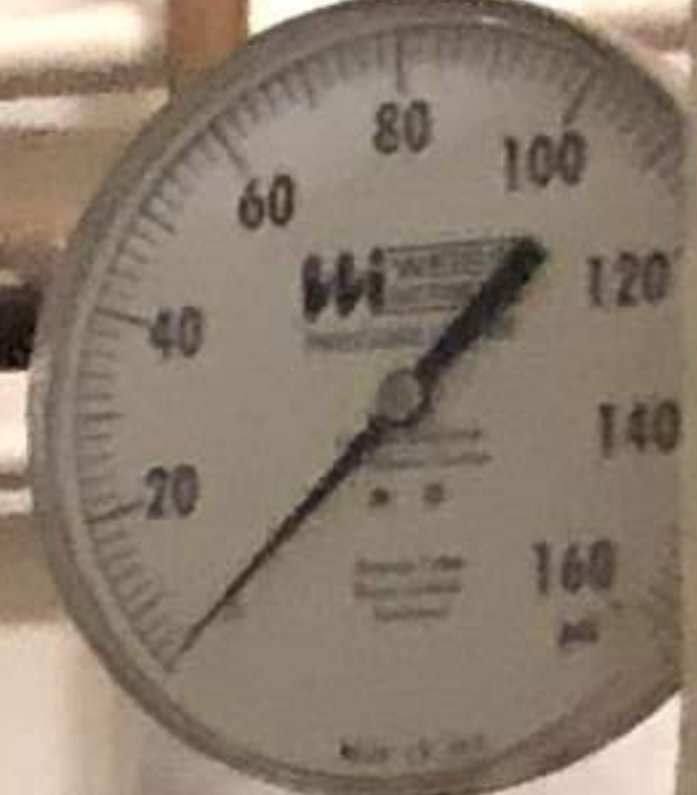


# Armstrong®

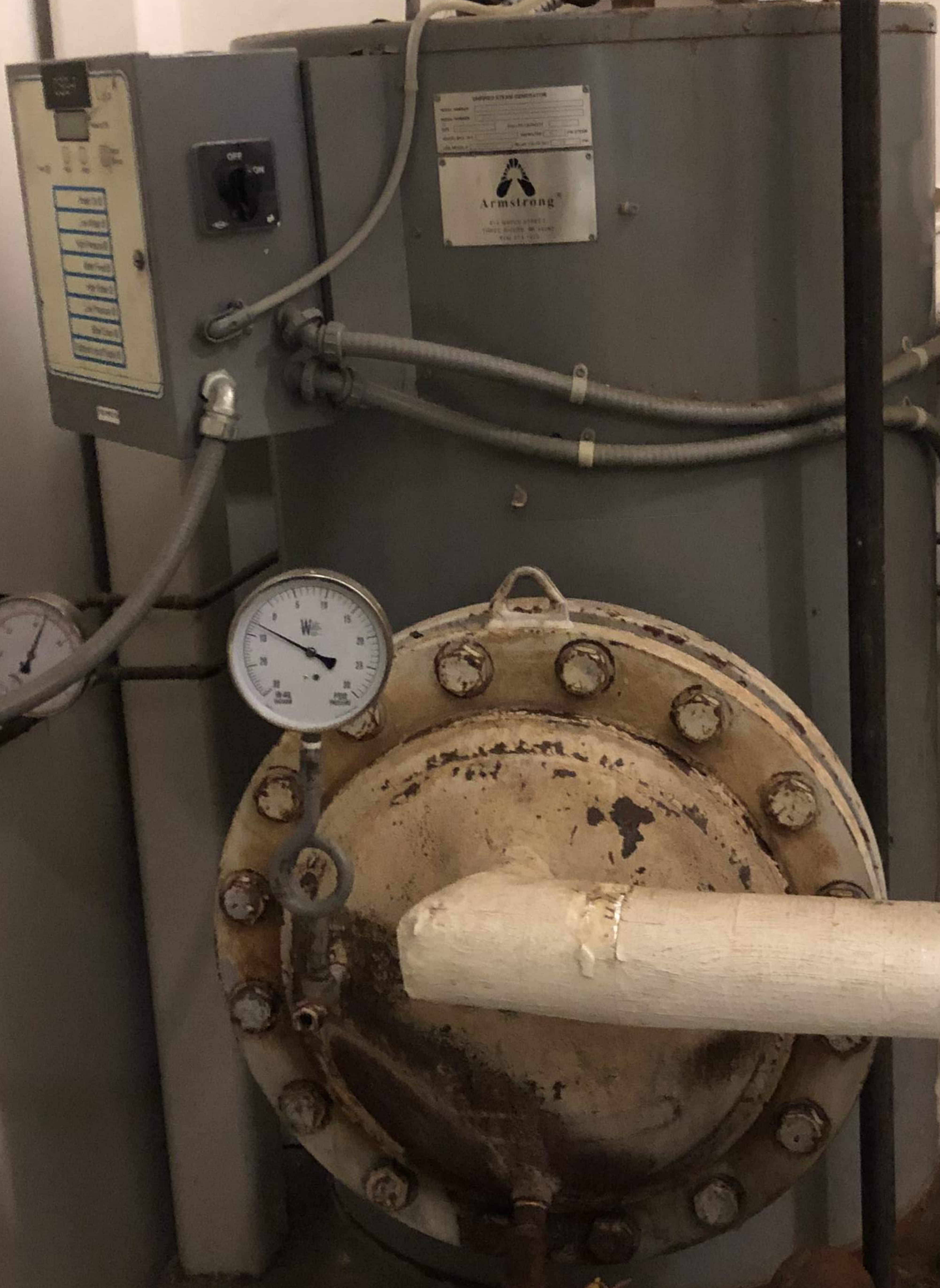
816 MAPLE STREET  
THREE RIVERS, MI 49093  
(616) 273-1415



DOMESTIC COLD WATER  
DOMESTIC HOT WATER



V  
A  
L  
V  
E



UNION





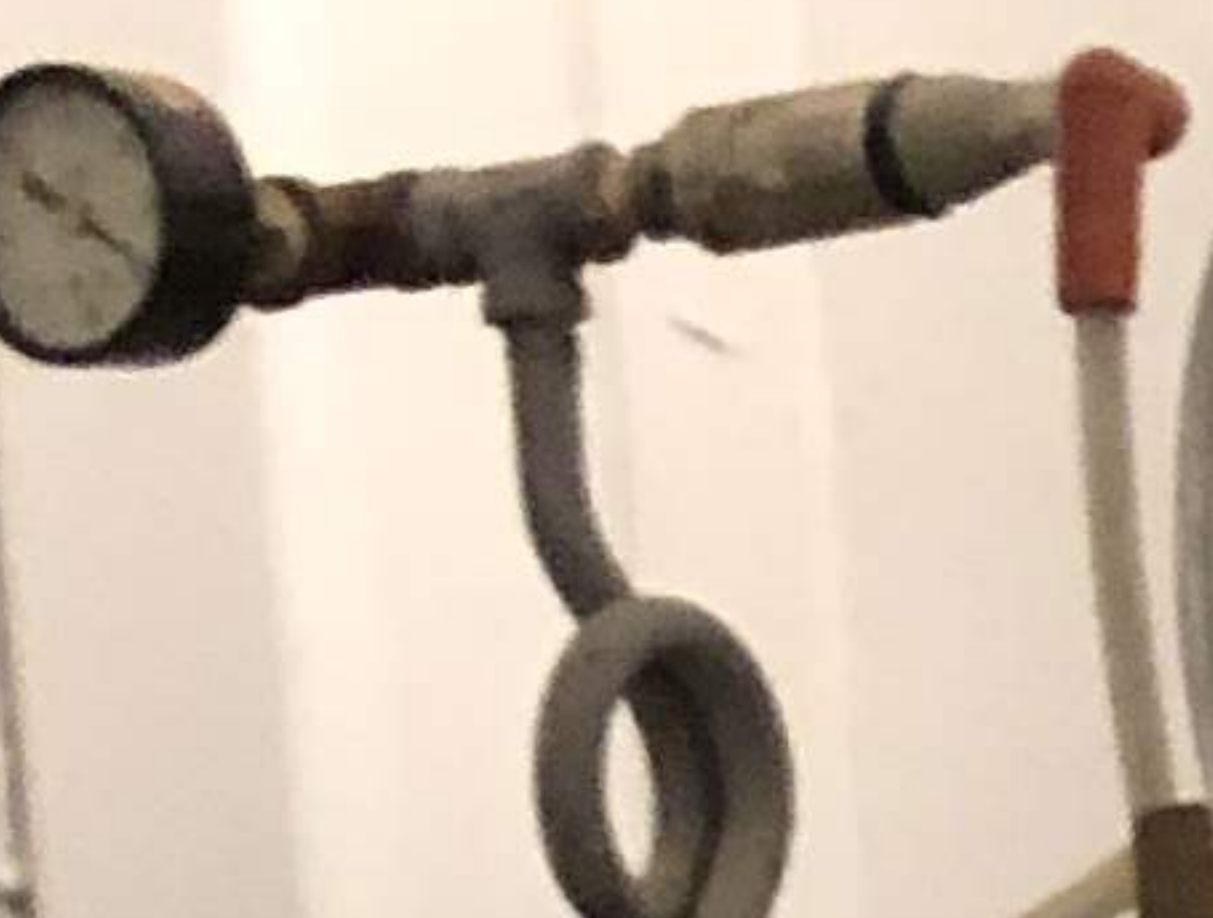


HOT WATER

V  
A  
L  
V  
E

U  
N  
I  
O  
N

Armstrong





CSG-1

Log

Pressure

Power On

Low Water

High Pressure

Water Feed

High Water

Low Pressure

Slow Down

Optional Input/Output

120 VOLTS

ARMSTRONG



Armstrong

EXHAUSTIVE SERVICE  
LARGELY USED IN THE  
INDUSTRY

