




University of Colorado  
Anschutz Medical Campus

## The Anschutz Health Sciences Building

Construction Update  
5 September 2019

**CAA**ICON

- 
- Construction Status
    - Accomplishments to Date
    - Upcoming Activities
  - Building Information Modeling (BIM) Coordination

# Agenda

# Project Leadership and Staff

The logo for CAAICON, with 'CAA' in red and 'ICON' in dark blue.

Doug Wilson, Project Director  
[doug.wilson@caaicon.com](mailto:doug.wilson@caaicon.com)

Daniel Loosbrock, Project Executive  
[daniel.loosbrock@caaicon.com](mailto:daniel.loosbrock@caaicon.com)

The logo for JEDUNN CONSTRUCTION, featuring a stylized blue 'D' icon above the text 'JEDUNN' and 'CONSTRUCTION'.

Eric Snelling, General Superintendent

The logo for the University of Colorado Anschutz Medical Campus, featuring the CU logo and the text 'University of Colorado Anschutz Medical Campus'.

David Turnquist, Associate Vice Chancellor  
Facilities Management

Michael Barden, Director  
Facilities Projects

Ethan Carter, PhD, Director  
Department of Environmental Health and Safety

Breanne Beck, Senior Industrial Hygienist  
Department of Environmental Health and Safety

LoriAnn Smith, Associate Director  
University Risk Management

An aerial photograph of a large university campus, showing a dense grid of buildings, parking lots, and green spaces. The image is in grayscale. Overlaid in the center is the text "Construction Status" in a large, bold, black sans-serif font.

# Construction Status

- Concrete Pours

- Level 1
- Level 2
- Grade beams
- Tunnel wall
- Sculptural Columns





An aerial, grayscale photograph of a large university campus. The image shows a dense cluster of multi-story academic buildings, several large parking lots, and various green spaces. A prominent road or highway runs diagonally across the left side of the frame. The overall scene is a comprehensive view of a modern educational institution.

# Upcoming Activities

19th

UPCOMING ACTIVITIES

Pour Concrete Level 1 North

Backfill Foundation Walls

Continue Forming Sculptural Columns

Form/ Reinforce Level 2 Deck Pour 1

MEP Underground

Slab-on-Grade Activities

REVERSE

R2 DOCK

R2

South Tunnel

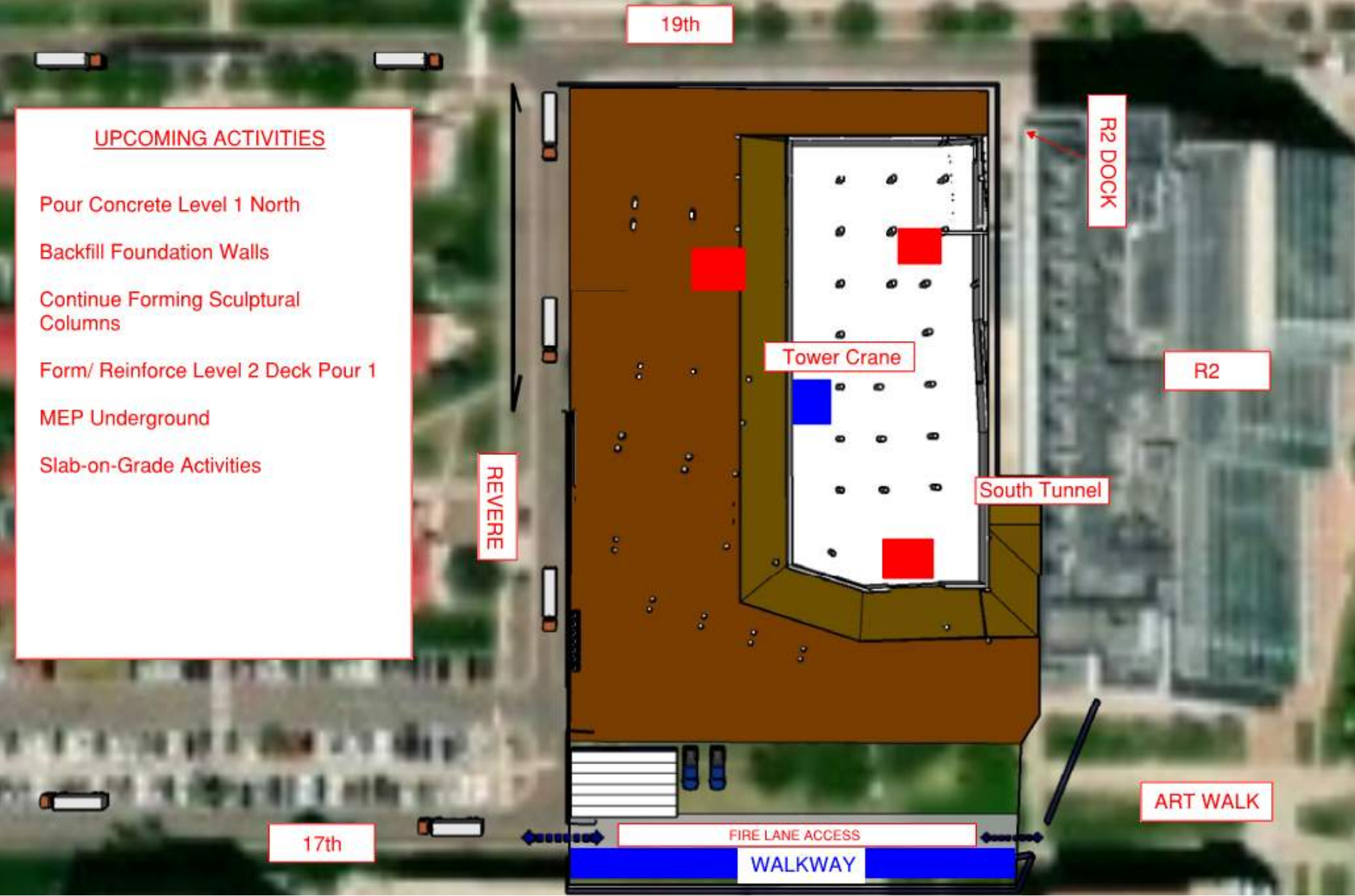
Tower Crane

ART WALK

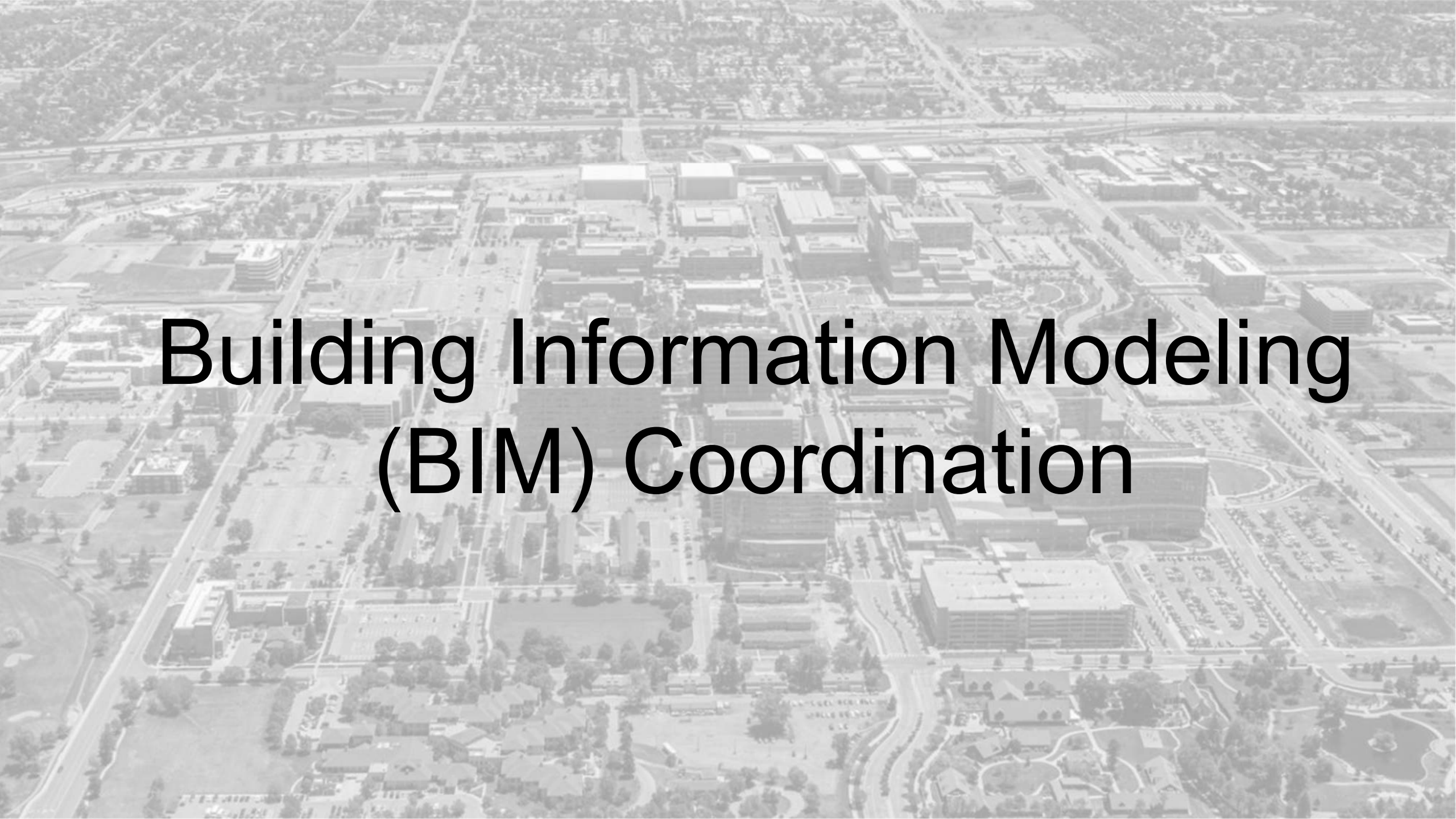
17th

FIRE LANE ACCESS

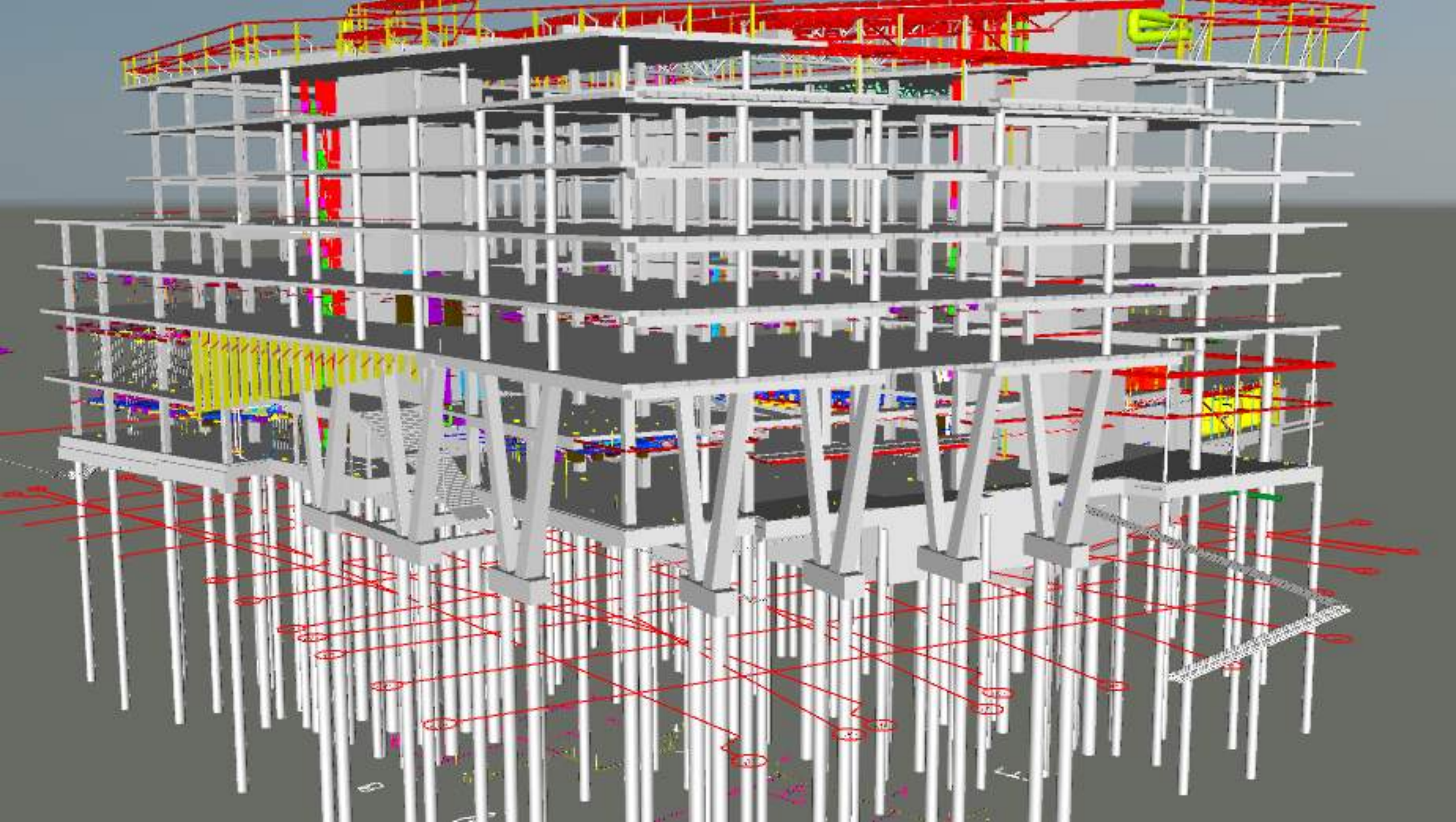
WALKWAY



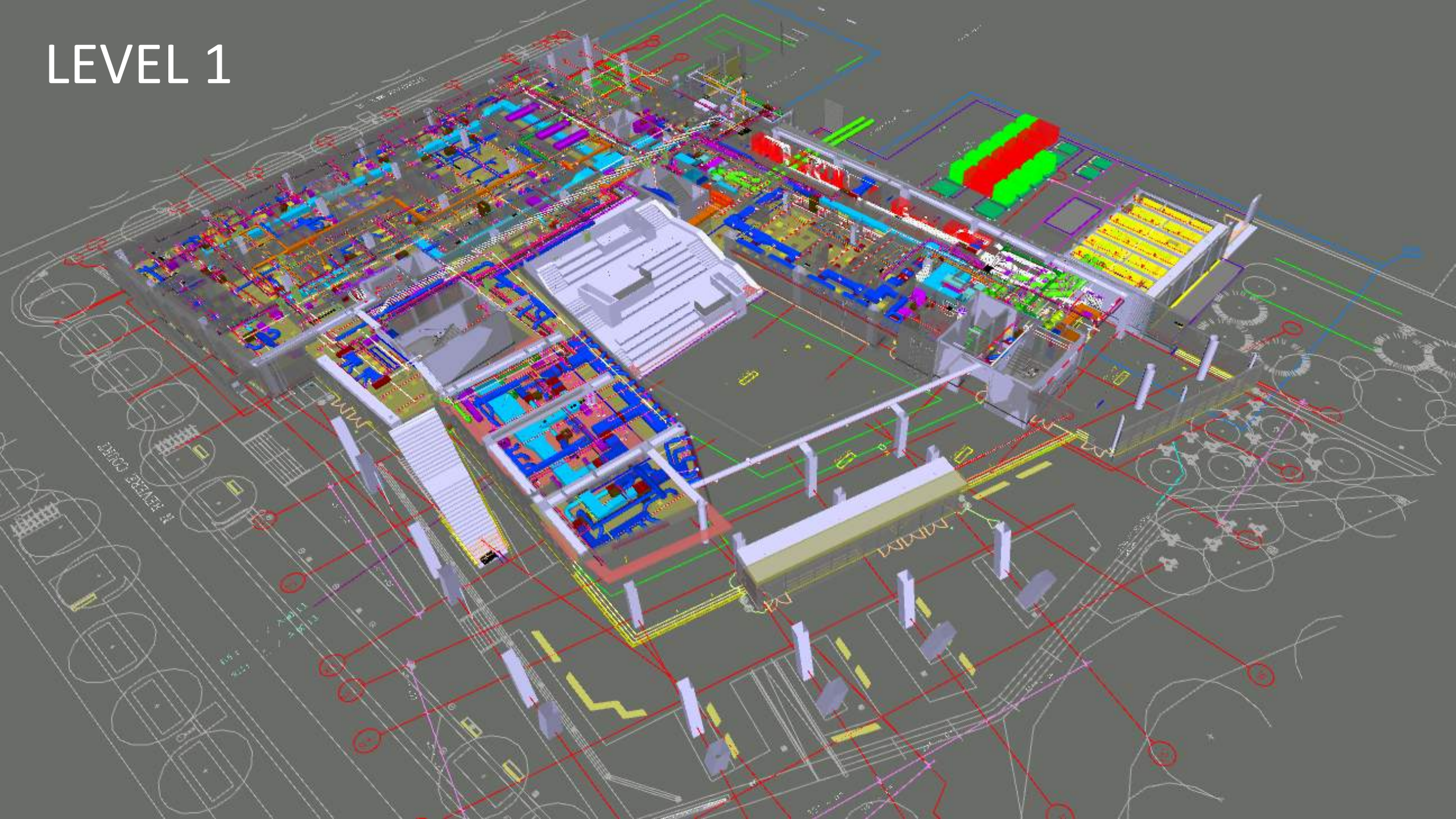


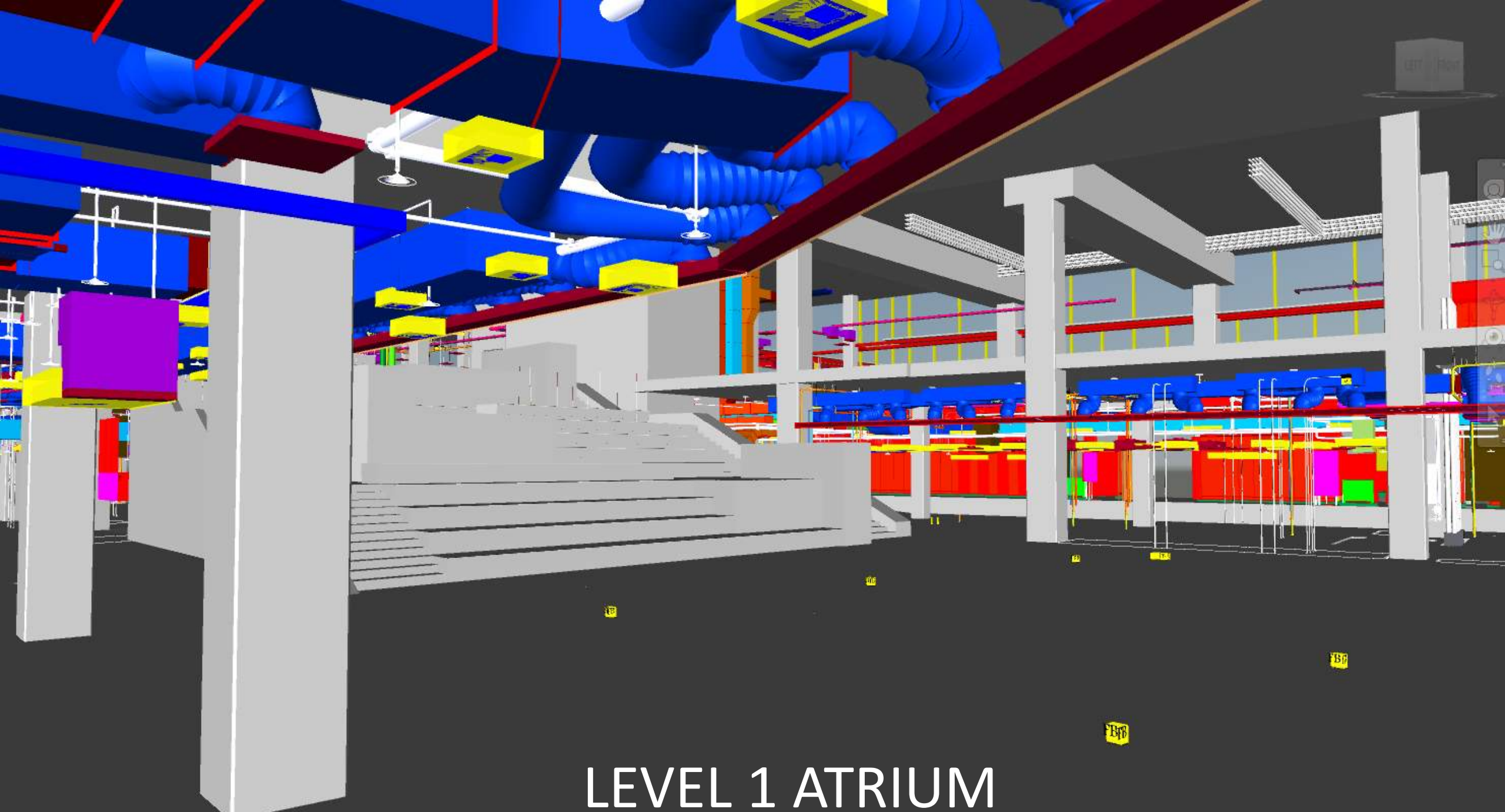
An aerial photograph of a city grid, showing streets, buildings, and green spaces. The image is semi-transparent, allowing the text to be clearly visible over the cityscape. The text is centered and reads "Building Information Modeling (BIM) Coordination".

# Building Information Modeling (BIM) Coordination



# LEVEL 1





# LEVEL 1 ATRIUM



# Reminders

- Next Town Hall
  - October 11<sup>th</sup> at 12:00pm
- Information can be found on the Facilities Active Projects website:  
<http://www.ucdenver.edu/about/departments/FacilitiesManagement/FacilitiesProjects/ActiveProjects/Pages/AnschutzHealthSciencesBldg.aspx>
- Contact Information
  - Doug Wilson, [doug.wilson@caaicon.com](mailto:doug.wilson@caaicon.com)

An aerial photograph of a university campus, showing a dense cluster of multi-story academic buildings, parking lots, and green spaces. The image is in grayscale. Overlaid on the left side of the image is the word "Questions?" in a large, bold, black sans-serif font.

Questions?