




University of Colorado  
Anschutz Medical Campus

## The Anschutz Health Sciences Building

Construction Update  
11 November 2019

**CAA**ICON



- 
- Construction Status
    - Accomplishments to Date
    - Upcoming Activities
  - LEED – Waste Diversion

# Agenda



# Project Leadership and Staff



Doug Wilson, Project Director  
[doug.wilson@caaicon.com](mailto:doug.wilson@caaicon.com)

Daniel Loosbrock, Project Executive  
[daniel.loosbrock@caaicon.com](mailto:daniel.loosbrock@caaicon.com)



Eric Snelling, General Superintendent



University of Colorado  
Anschutz Medical Campus

David Turnquist, Associate Vice Chancellor  
Facilities Management

Michael Barden, Director  
Facilities Projects

Ethan Carter, PhD, Director  
Department of Environmental Health and Safety

Breanne Beck, Senior Industrial Hygienist  
Department of Environmental Health and Safety

LoriAnn Smith, Associate Director  
University Risk Management

An aerial photograph of a large university campus, showing a dense arrangement of academic buildings, dormitories, and green spaces. The image is in grayscale, with the text 'Construction Status' overlaid in the center. The campus layout includes a central corridor with buildings on either side, and various parking lots and open areas. The text is in a large, bold, black font.

# Construction Status





## Concrete Pours

7 of 7 V Columns

Level 2 Pours 1, 2 & 3

Level 3 Pour 1

Slab on Grade North

Elevator and Stair Cores







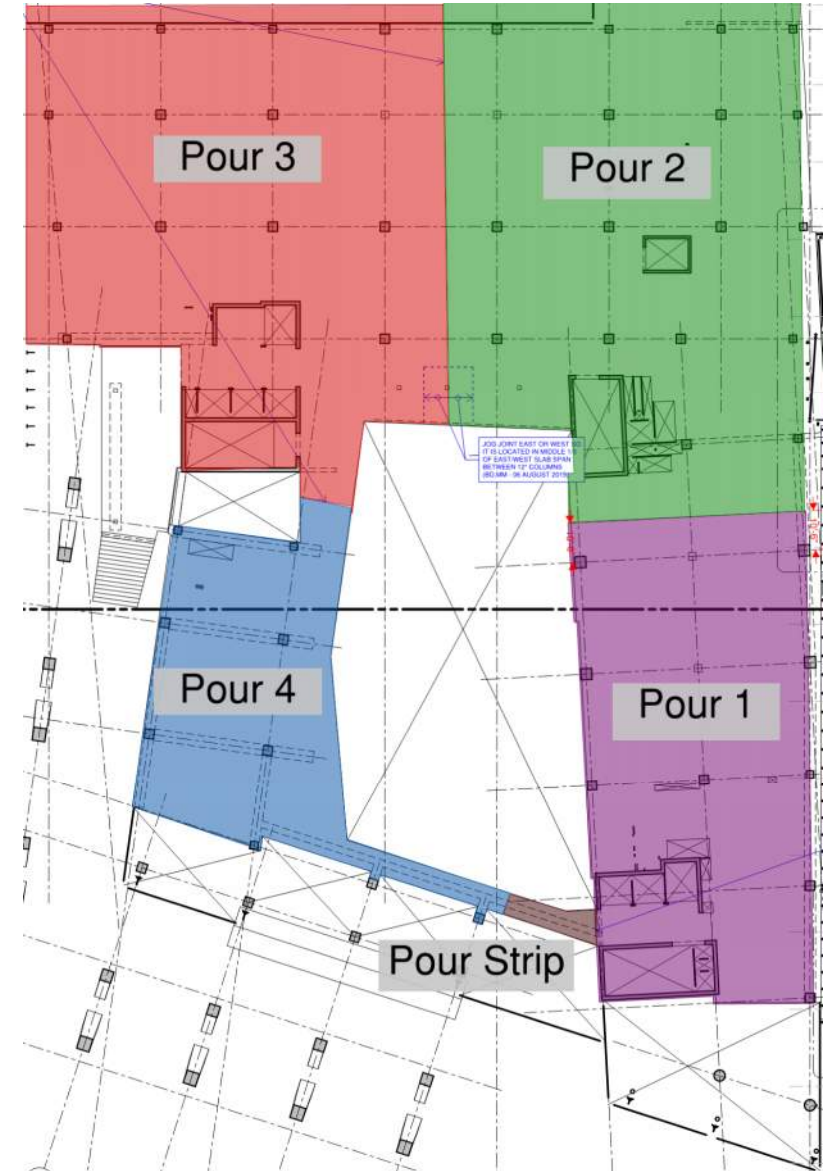
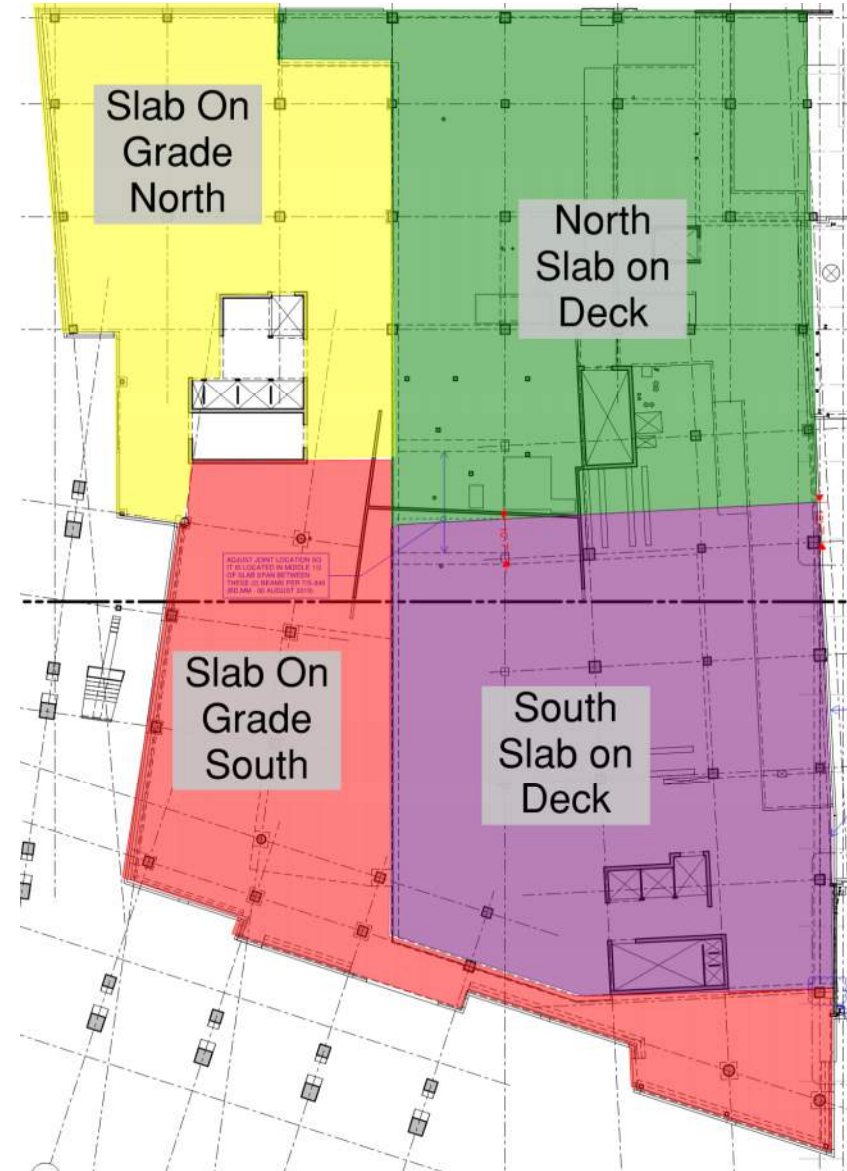


An aerial, grayscale photograph of a large university campus. The image shows a dense collection of academic buildings, dormitories, and administrative structures. There are several large green spaces, including a prominent lawn in the lower center and various smaller parks and fields. A network of roads and walkways crisscrosses the campus. The text "Upcoming Activities" is centered over the middle of the image in a large, black, sans-serif font.

# Upcoming Activities

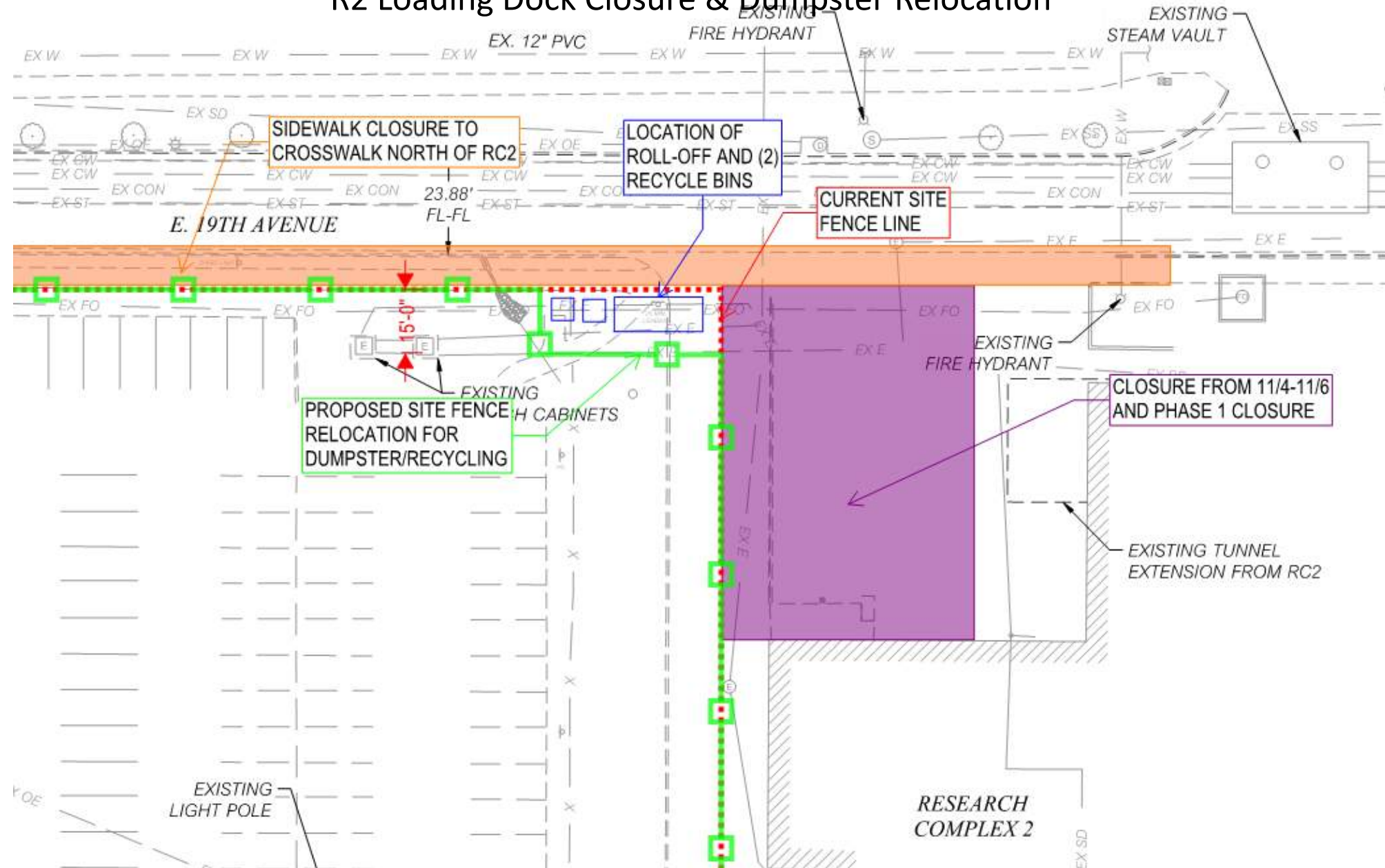
# Upcoming Activities

- Level 2 Pour 4
- Framing and Decking of Level 3 Pour 2
- Level 3 Pour 2
- Continued reinforcing, along with Plumbing and Electrical coordination.
- Ongoing design for AHSB Basement Build-out.
- Onboarding balance of subcontractor workforce.
- Equipment Procurement





## R2 Loading Dock Closure & Dumpster Relocation






An aerial photograph of a city campus, likely a university, featuring numerous buildings, parking lots, and green spaces. The image is in grayscale. Overlaid on the center of the image is the text "LEED – Waste Diversion" in a large, bold, black sans-serif font.

# LEED – Waste Diversion



# Green Badger – Tracking Tool

 MORGAN DOTY ▾

☰ / Projects Active Archive ↓<sub>2</sub>Name ↓<sub>1</sub>Date + Add

Signed in successfully. ×

AHSB v4 BD+C Activity Edit Leave Project

1890 N Revere Ct.  
Aurora , CO No zip , US

28 %

Complete

Administrator Jimmy Kaczmarek

Duration Jan 30, 2019 — Nov 01, 2021

**Team Members** jimmy.kaczmarek@jedunn.com rachel.brashear@jedunn.com charlie.slattery@jedunn.com  
susanna.marshall@jedunn.com aimee.bassett@jedunn.com matt.ewertz@jedunn.com morgan.doty@caaicon.com  
bwilliams@amdarchitects.com doug.wilson@caaicon.com courtney@francesustainable.com clayton.butler@jedunn.com





# Construction Waste Tracking

GRN BADGER

Projects

▼ AHSB v4 BD+C

Construction Waste Recycling ▼

MRc5

Tons ▼

Total waste

1359.555 tons

Total waste diverted

1359.555 tons

Total number of material streams

2 w.s.

Filter by tag:

Select tag ▼

Clear

Filter

Material	Material Description	Material Stream	Total Waste	Diverted Waste	Demolition Waste	Hauler / Location
Asphalt	Existing Site Pa...	Salvaged	411.075	411.075	Yes	Laydown area off Peoria and Montview
Concrete	Existing Site Co...	Recycled - source sepa...	23.84	23.84	Yes	Allied Recycled Aggregates/P.O. Box 566 Commerce City, CO 80037-0566

Loader Bucket size (CY)	3.5	The average scoop size is about 3.5 Cubic Yards
Scoops per truck	2	Two Scoops per truck in a tandem truck. Aim for 7CY
Weight of Asphalt (Pounds)	3915	Weight of Asphalt
Weight on trucks (Tons)	13.7025	((7 Cubic Yards) x (3915 Pounds)) / 2000 pounds per ton
Number of Truck Loads	30	Number of Loads of Asphalt salvaged
Total Weight Asphalt (Tons)	411.075	26 truck loads x 13.7025 tons = 411.075 tons



An aerial, grayscale photograph of a large university campus. The image shows a dense arrangement of academic buildings, dormitories, and administrative structures. A network of roads and walkways crisscrosses the campus, interspersed with green spaces, trees, and athletic fields. The overall layout is organized and sprawling. Overlaid in the center of the image is the word "Reminders" in a large, black, sans-serif font.

# Reminders



- Next Town Hall
  - December 2<sup>nd</sup> at 11:00am
- Information can be found on the Facilities Active Projects website:  
<http://www.ucdenver.edu/about/departments/FacilitiesManagement/FacilitiesProjects/ActiveProjects/Pages/AnschutzHealthSciencesBldg.aspx>
- Contact Information
  - Doug Wilson, [doug.wilson@caaicon.com](mailto:doug.wilson@caaicon.com)
  - Dan Loosbrock, [dan.Loosbrock@caaicon.com](mailto:dan.Loosbrock@caaicon.com)

An aerial photograph of a large university campus. The image shows a dense cluster of academic and administrative buildings, interspersed with green spaces, trees, and parking lots. A major road or highway runs along the right side of the campus. The overall scene is captured from a high angle, providing a comprehensive view of the campus layout.

# Questions?