



University of Colorado  
Anschutz Medical Campus

## The Anschutz Health Sciences Building

Construction Update  
11 October 2019

CAAICON



- 
- Construction Status
    - Accomplishments to Date
    - Upcoming Activities
  - Schedule Development

# Agenda



# Project Leadership and Staff



Doug Wilson, Project Director  
[doug.wilson@caaicon.com](mailto:doug.wilson@caaicon.com)

Daniel Loosbrock, Project Executive  
[daniel.loosbrock@caaicon.com](mailto:daniel.loosbrock@caaicon.com)



Eric Snelling, General Superintendent



University of Colorado  
Anschutz Medical Campus

David Turnquist, Associate Vice Chancellor  
Facilities Management

Michael Barden, Director  
Facilities Projects

Ethan Carter, PhD, Director  
Department of Environmental Health and Safety

Breanne Beck, Senior Industrial Hygienist  
Department of Environmental Health and Safety

LoriAnn Smith, Associate Director  
University Risk Management

An aerial photograph of a large university campus, showing a dense arrangement of academic buildings, dormitories, and green spaces. The image is in grayscale, with the text 'Construction Status' overlaid in the center. The campus layout includes a central corridor with buildings on either side, and various courtyards and parking areas. The text is in a large, bold, black font.

# Construction Status





## Concrete Pours

6 of 7 V Columns

Level 2 Pour 1

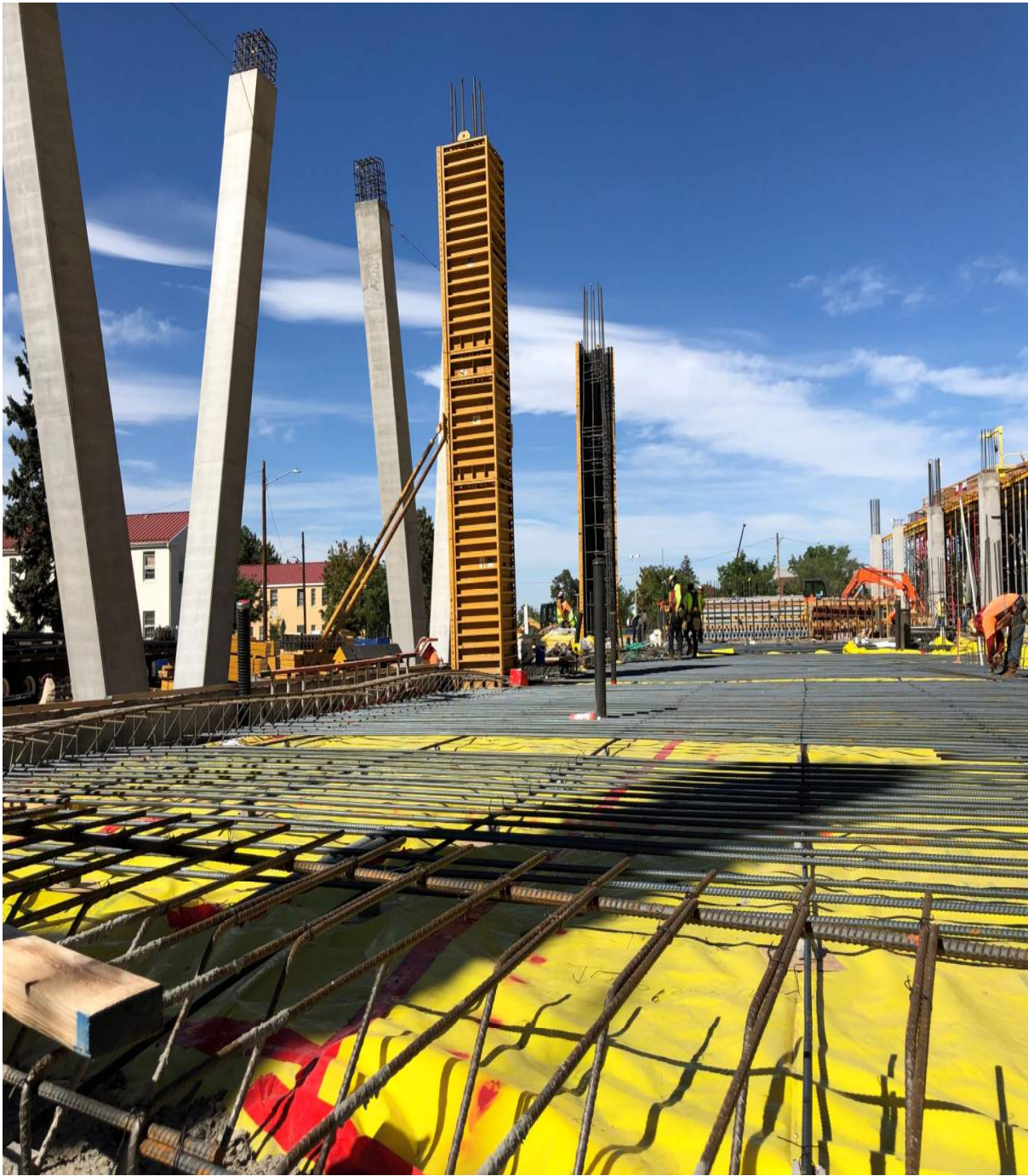
Grade beams

North West Stair Core

Slab on Grade South







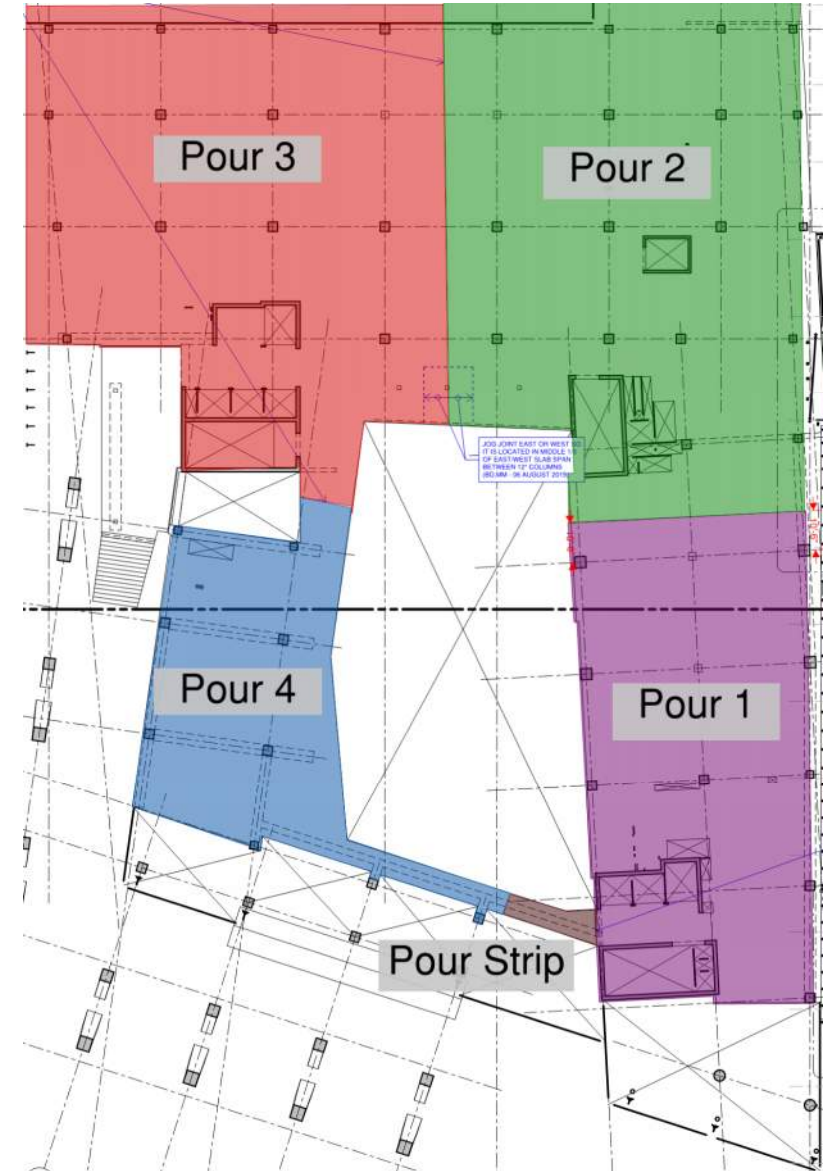
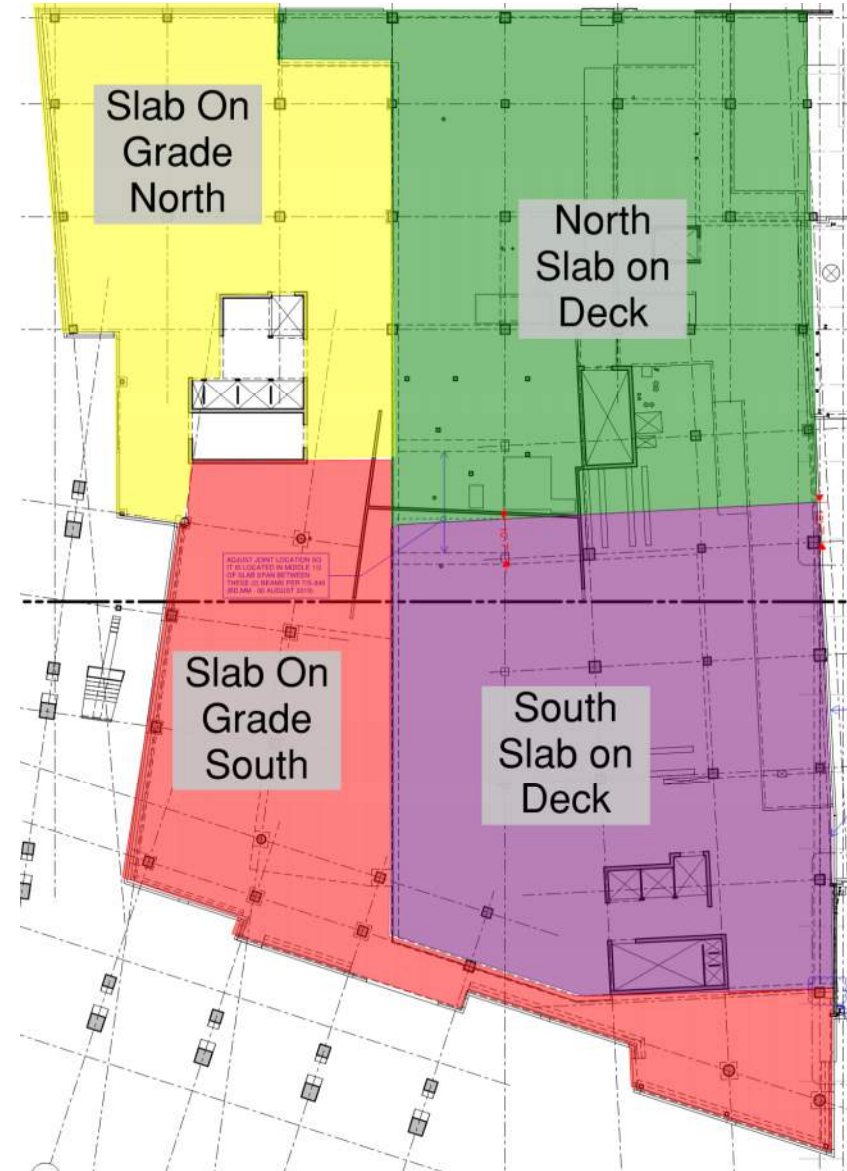


An aerial, grayscale photograph of a large university campus. The image shows a dense collection of academic and administrative buildings, interspersed with green spaces, trees, and parking lots. A major road or highway runs horizontally across the upper portion of the image. The text "Upcoming Activities" is centered over the middle of the campus in a large, black, sans-serif font.

# Upcoming Activities

# Upcoming Activities

- Slab on Grade North
- Level 2 Pour 3 and 4
- Level 3 Pour 1
- Framing and Decking of Level 3 Pour 2
- Continued Reinforcing, along with, Plumbing and Electrical coordination.
- Ongoing Design for Basement Build-out.



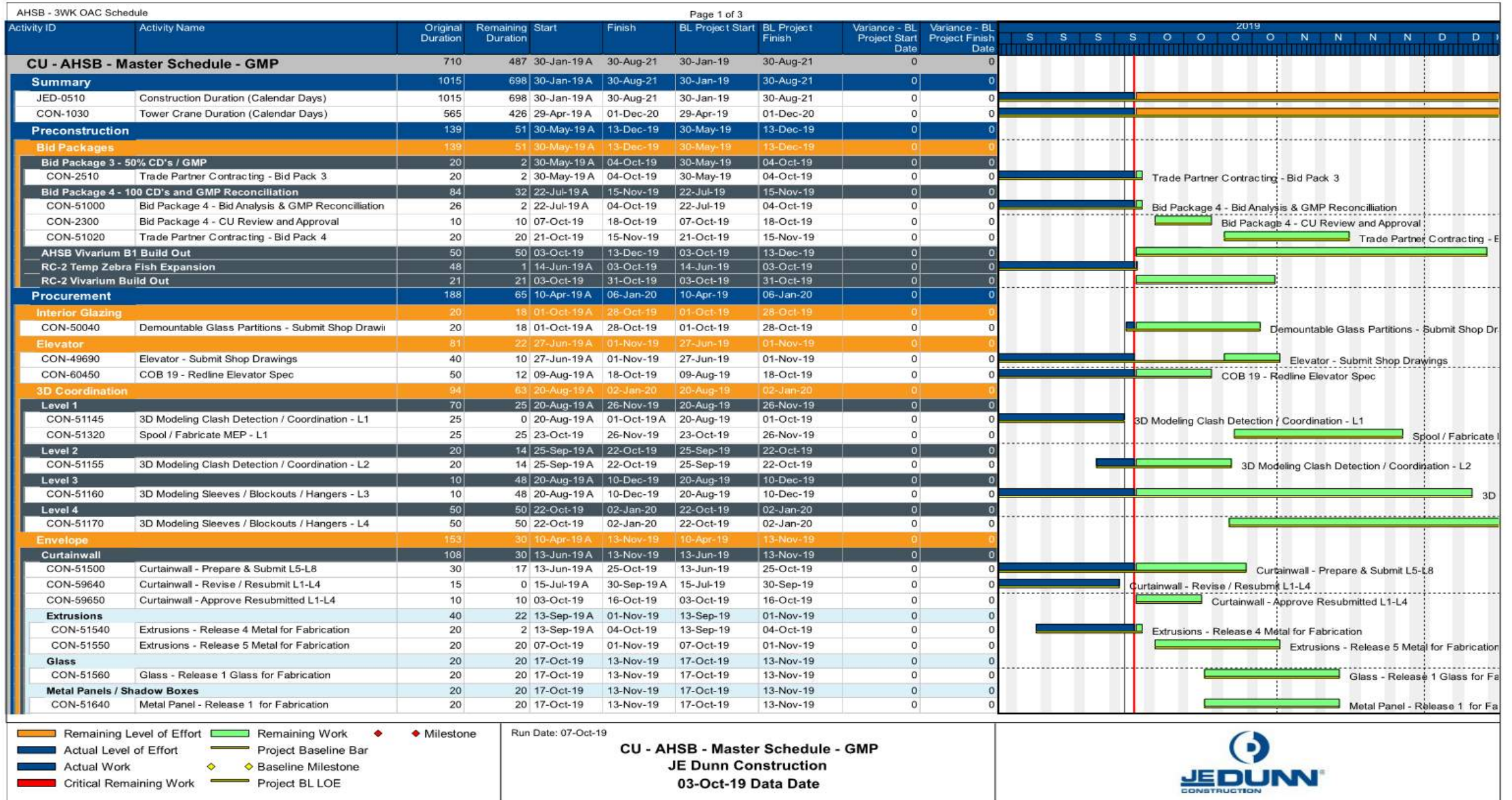


An aerial photograph of a university campus, showing various academic buildings, parking lots, and green spaces. The text "Schedule Development" is overlaid in the center in a large, black, sans-serif font.

# Schedule Development



# CPM Schedule





# Weekly Work Plan



Project No.		Total Activities	33	Activities Completed	0	Percent Planned Complete	0%							Max Manpower	66	
Week Of	10/7/2019						58	61	66	53	50	38				
Trade Partner	Activity	Area	SOW	Floor	Commitment Description	Responsible Party	Mon	Tue	Wed	Thu	Fri	Sat	Completed Per Plan	Categories of Variance	Reason for Variance	
JED SP	2		Formwork	Floor 1	Strip V-columns	Danny	4									
JED SP	3		Formwork	Floor 1	Strip reset	Danny		5	5							
JED SP	4		Formwork	Floor 1	Button up V-columns	Danny			5	5						
JED SP	5		Formwork	Floor 1	Pour V-columns	Danny					3					
JED SP	7		Formwork	Floor 2	Set Stair #2	Steve	6	5								
JED SP	8		Formwork	Floor 2	Button up stair #2	Steve		6	6							
JED SP	9		Formwork	Floor 2	Pour Stair #2	Steve			4							
JED SP	10		Formwork	Floor 2	Strip stair #2	Steve				6						
JED SP	11		Formwork	Floor 2	Set NW Core	Steve				6	6					
JED SP	13		Formwork	Floor 2	Set column lvl 2 and 1	Rudy	4	4	4	4	4					
JED SP	14		Formwork	Floor 2	Pour columns	Rudy	2		2		2					
JED SP	15		Formwork	Floor 2	Strip columns/set	Rudy	4	4								
JED SP	17		Formwork	Floor 1	SOG North Prep	Chad	4	4	4	4	4					
JED SP	19		Formwork	Floor 2	Assist with columns/core	Ivan	3	3	3	3	3					
CFA	21		Formwork	Floor 3	Framing / decking	Dimas	12	12	12	12	12	12				
CFA	22		Formwork	Floor 2	Strip edge form	Dimas	4									
CFA	23		Formwork	Floor 2	Reshore / clean up basement	Dimas	2	6								
CFA	24		Formwork	Floor 2	Strip / reshore	Dimas			6	6	6	6				
MRech	25		Plumbing	Floor 1	Drinking coffee and eating doughnuts	Mark/Sean	2	2	2	1	2					
MRech	26		Plumbing	Floor 1	Prep SOG for pour	Mark/Sean			1							



An aerial, grayscale photograph of a large university campus. The image shows a dense collection of academic and administrative buildings, interspersed with green spaces, trees, and parking lots. A major road or highway runs along the left side of the campus. The overall layout is organized and sprawling. The word "Reminders" is superimposed in the center of the image in a large, black, sans-serif font.

# Reminders



- Next Town Hall
  - November 11<sup>th</sup> at 11:00am
- Information can be found on the Facilities Active Projects website:  
<http://www.ucdenver.edu/about/departments/FacilitiesManagement/FacilitiesProjects/ActiveProjects/Pages/AnschutzHealthSciencesBldg.aspx>
- Contact Information
  - Doug Wilson, [doug.wilson@caaicon.com](mailto:doug.wilson@caaicon.com)
  - Dan Loosbrock, [dan.Loosbrock@caaicon.com](mailto:dan.Loosbrock@caaicon.com)



An aerial photograph of a large university campus. The image shows a dense collection of academic buildings, some with modern architectural features like curved facades. There are several large parking lots filled with cars, green spaces with trees, and a network of roads. The overall scene is a comprehensive view of a higher education institution's grounds.

# Questions?