

- Overview
- Monitoring Points
- Alerts 31
- Reports
- Calibration
- Audit Trail
- Manage
- Support

Anschutz Medical Campus / AHSB (P12) / P12-6th Floor - CORE LAB / Freezer 1420 (-70)

Freezer 1420 (-70)

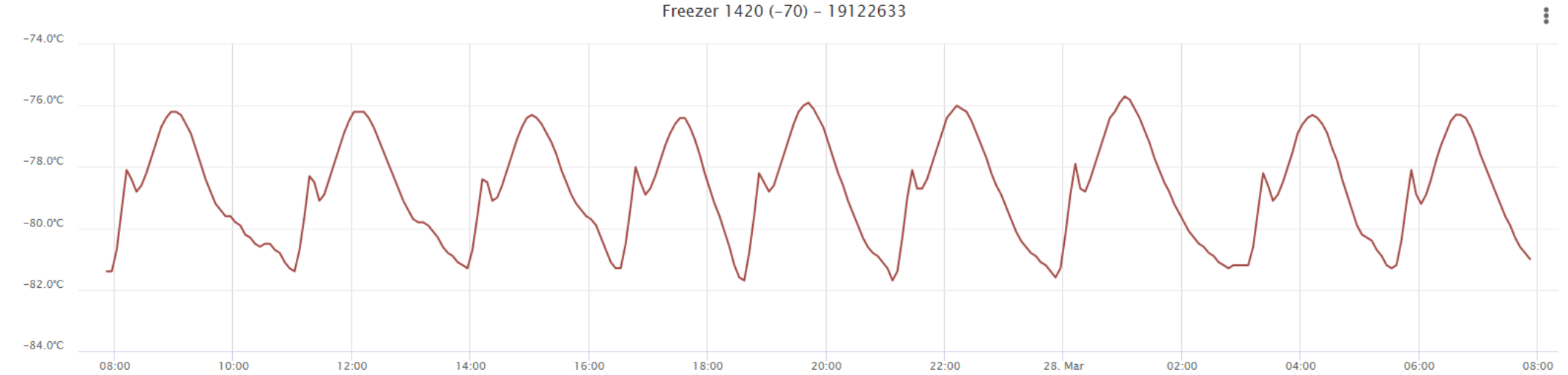
Data Logger

19122633

Overview Alarms Settings

Click on Settings

03/27/2025 7:51:55 am — 03/28/2025 7:51:55 am



Reference Lines Export Upload Data Replace

Show/Hide	Channel Name	Average	Minimum	Maximum	Mean Kinetic Temp
<input checked="" type="checkbox"/>	Temperature CH:1 <a href="#">Edit</a>	-78.8°C	-81.7°C	-75.7°C	-78.4°C

Annotations



Overview

Monitoring Points

Alerts 31

Reports

Calibration

Audit Trail

Manage

Support

Anschutz Medical Campus / AHSB (P12) / P12-6th Floor - CORE LAB / Freezer 1420 (-70)



# Freezer 1420 (-70)

Data Logger

19122633

Overview

Alarms

Settings

Data Logger

Firmware

Sensors

Click on Sensors

Location \*

P12-6th Floor - CORE LAB

Add New Location

Data Logger Name

Freezer 1420 (-70)

Sample Interval

Company Default (Currently: 5 minutes)

**Note:** The sample rate will be automatically adjusted to a minimum of 5 minutes for RF loggers, and 1 hour when there is no active subscription. Changing the sample rate may clear any unsent readings on your data logger. Do not change the sample rate while your data logger is catching up.

Data Logger Export Mode

Company Default (Currently: Latest)

Choose whether your data logger exports all data since it started logging or just the data since the last export when a USB memory stick is connected. Currently only supports RFL data loggers.

Data Logger Export Format

Company Default (Currently: Both CSV and LOJ)

Choose the file format that exports when exporting data from a data logger via USB memory stick. Currently only supports RFL data loggers.

Temperature Display Unit

☒ Company Default (Currently: °C)

☐ °F

☐ °C

Pressure Display Unit

☒ Company Default (Currently: inWC)

☐ inWC

☐ mmHg

☐ Pa



- Overview
- Monitoring Points
- Alerts 31
- Reports
- Calibration
- Audit Trail
- Manage
- Support

Anschutz Medical Campus / AHSB (P12) / P12-6th Floor - CORE LAB / Freezer 1420 (-70)

Freezer 1420 (-70) Data Logger 19122633

Overview Alarms Settings

Data Logger Firmware Sensors

Current Sensors

Port	Serial	Channel(s)	Factory calibration date	Last reported at
1	19180779	Temperature CH:1	05/20/2024	03/28/2025 07:51:55 AM MDT

Sensor History

Port	Serial	Factory calibration date	Calibration History	Started Reporting	Ended Reporting
1	19180779	05/20/2024	-	06/19/2024 11:15:23 AM MDT	-
1	19125001	04/14/2023	-	04/26/2023 02:24:53 PM MDT	06/19/2024 11:15:23 AM MDT

View All Data Logger Certificates

Certification Dates

Click on View Data Logger Certificates



- Overview
- Monitoring Points
- Alerts 29
- Reports
- Calibration
- Audit Trail
- Manage
- Support

Certificates

Sensor Serial No.

Select

Date Range

Select

More Filters

Bulk Download

Clear All Filters

Freezer 1420 (-70) x

<input type="checkbox"/>	Sensor Serial No.	Calibration Date	Certificate	Data Logger	Location	Tags
<input type="checkbox"/>	19180779	05/20/2024	<a href="#">Download PDF</a>	Freezer 1420 (-70)	P12-6th Floor - CORE LAB	Temperature

1 to 1 of 1

Page 1 of 1

Click on Download



Open all PDFs with Acrobat Reader to easily view and comment on PDFs.

Set as default app

- [View more](#)



10060938

*Certificate report shall not be reproduced, except in full, without written authorization from Dickson*

Dickson Model Number	RS040	Calibration Standards
Dickson Serial Number	19180779	Hart Scientific Fluke-1502A Ser. B84646
Calibration Date	05/20/2024	Customer Name 156317 UNIVERSITY OF COLORADO
Issue Date	05/31/2024	Customer Notes
Calibration Type	1 Pt NIST New Unit	
Calibration Procedure	AQWI 7.1	
Environmental Conditions	75 ±10 °F 45 ±15% RH	



TEMPERATURE °F (°C)			
CALIBRATION STANDARD READING	CUSTOMER INSTRUMENT READING	DIFFERENCE	UNIT SPECIFICATION
75.0 (23.9)	74.8 (23.8)	0.2 (0.1)	+ 0.5 (0.3) from -148.0 to 350.0.

The customer instrument was compared to the calibration standard. All known sources of uncertainty, present at the time of calibration, were combined into one uncertainty and reported "as received" or "adjusted" to a standard traceable to the SI through the National Institute of Standards and Technology (NIST). The Dickson calibration system conforms to the requirements of MIL-STD-45662A, ANSI/NCSL 2540-1, and ISO/IEC 17025:2017, as appropriate.

This certificate relates to this specific unit. This certificate number is unique to this specific Model Number, Serial Number, and Calibration/Issue Date.

NOTE: Dickson brand product and accessories are required to achieve stated accuracy.

This document is printable

Steve Thompson

Approved By  
Steve Thompson

NSI

**DICKSON**  
Environmental Monitoring + Compliance Experts

930 S. Westwood Ave, Addison, IL 60101  
CALL 630.543.3747 FAX 630.543.0498  
DicksonData.com

PAGE 1 OF 1

CERTIFICATE #10060938

10