

The Cancer Biology Program

Top 10 Program Features

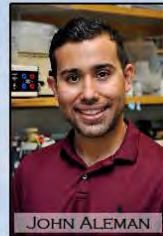
Anschutz Medical Campus 2022



Cancer Biology Top 10 Program Features



UNIVERSITY OF COLORADO ANSCHUTZ MEDICAL CAMPUS
CANCER BIOLOGY
GRADUATE TRAINING PROGRAM 2022-2023



JOHN ALEMAN



ELLEN BAMBERG



JAIDEV BAPAT



PHOEBE CAO



MARY GRACE CARROLL



SOPHIA CORBO



LAUREN COZENS



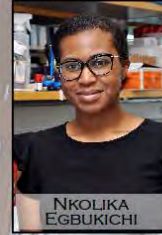
PETRA DAHMS



LORRAINE DAVIS



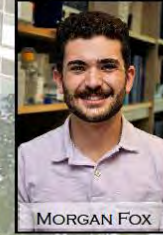
KADY DENNIS



NKOLIKA EGBUKICHI



ALAN ELDER



MORGAN FOX



CLARISSA GARCIA



PARSA HAQUE



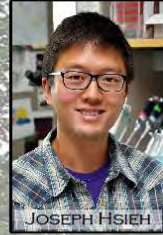
HANNAH HICKS



BRIDGET HOAG



MAUREEN HOEN



JOSEPH HSIEH



CLAIRE IHLE



ANAGHA INGULA



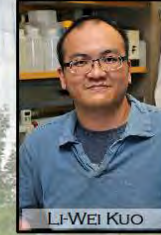
ALANA KELLER



MEGHAN KELLETT



KELSEY KINES



LI-WEI KUO



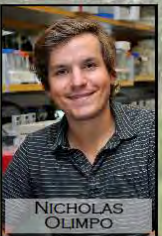
ABRAHAM MARTINEZ



ALLIE MCMELLEN



REGAN MILLER



NICHOLAS OLIMPO



DANIELA ORTIZ



CONNOR PURDY



MADISON ROSE



RACHEL STEINMETZ



ASHLEY WARD



PEARL WILCOCK



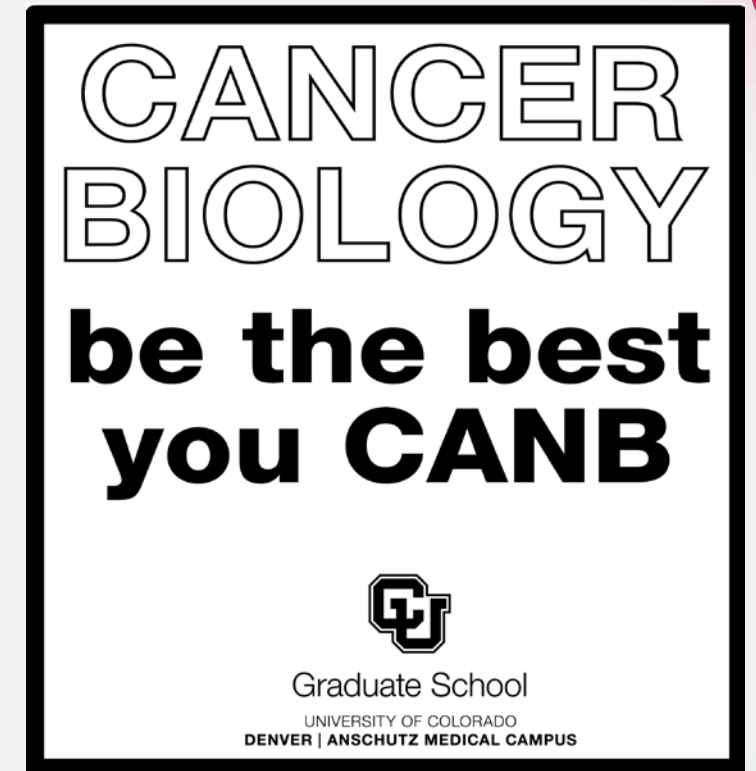
LISA WOOD



ASHLEY WU

1. We have an amazing CANB community!

- SAB: Student Advisory Board
 - Established in 2017
 - A board of students representing years 2-5+ and BSP and MSTP students
 - Acts as a liaison between students and faculty, making sure both student and faculty needs are met
 - Monthly coffee and happy hours
 - Curriculum development, program direction
 - Representative at faculty steering meetings
- Round Table
 - Student led meetings for scientific discussions and student collaborations
 - “Safe Space” with out faculty
 - Rotation practice talks with senior students
 - Comps practice
 - Journal clubs



3. We have a CANB program-specific T32 training grant

- A T32 is a mark of a mature, high quality program as recognized by the NIH
 - Exemplifies rigor and success past students have had in our program
- Integrated training community with both pre- and post-docs
 - 5 Pre-doc slots
- Annual T32 Symposia held in addition to weekly RIP Talks
- Numerous Training Opportunities for Scientific and Career Advancement
 - CABTRAC – Cancer Biology Training Consortium Conference
 - Workshops and Short Courses
 - Career Panels
 - Much more



4. We partner with the CU Cancer Center!

- This partnership includes:
 - Joint Cancer Biology program seminar series
 - Funding (Seminars and programming)
 - Jointly sponsor workshops (Animal Models, Proteomics)



University of Colorado Cancer Center

SYMPOSIUM SERIES



5. We have a CANB Annual retreat!

- One day or over night retreat for all CANB Students, Post-docs and Faculty.
- In-person retreat at the Denver Zoo this year!
- Network with Distinguished Invited Keynote Speakers:
 - Dr. Heike Keilhack, PhD
- Receive feedback from CANB students/faculty during poster and oral presentations
- Attend career panel featuring academia and industry



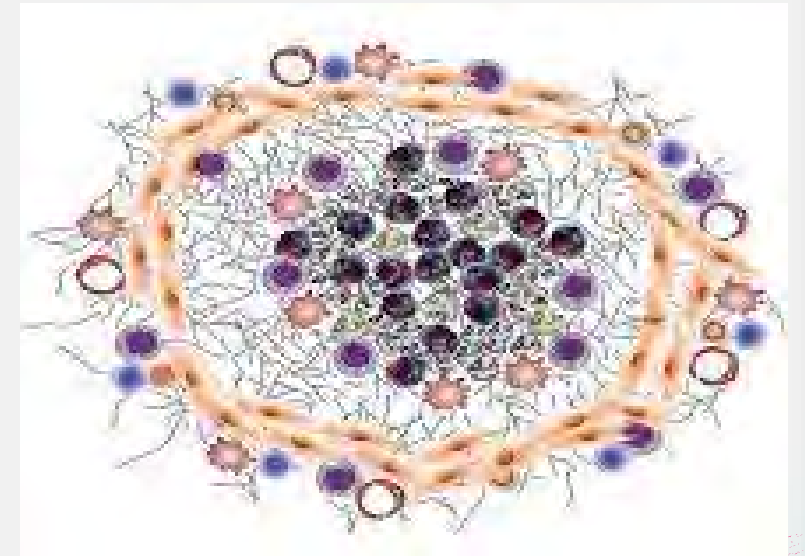
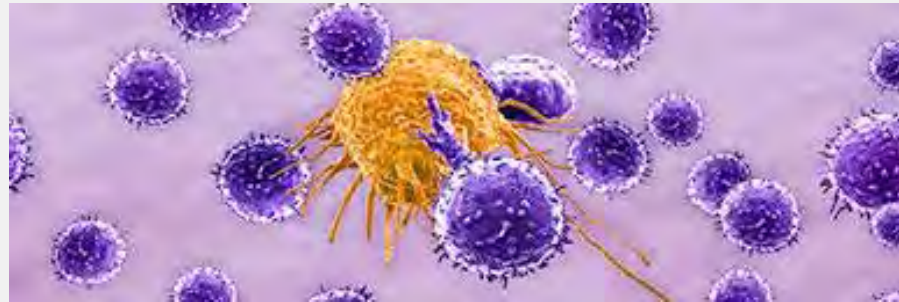
6. First year Cancer Biology Curriculum

- **Journal Club**
 - Student led with a faculty advisor. Once weekly.
- **Core Topic Classes**
 - Cancer Biology
- **Pathobiology of Cancer (Early January)**
 - ~Two weeks, every day
- **Cancer Biology and Grant Writing in Cancer Biology Joint Course**
 - 3 Blocks on different CANB Themes, Grant Writing starts in Block 2
 - 30 min lecture by a Professor
 - Journal club discussion
 - A short take home assessment at the end of each block
 - Grant writing: Learn how to write all components of a grant and develop a hypothesis.



7. We sponsor unique special topics short courses

- Proteomics for Cancer Research
 - Short course Directed by Dr. Maggie Lam
- Special Topics in Cancer Immunology
 - Short course Directed by Dr. Jing H. Wang
- From Cells to humans: Understanding complexities of study design, data collection and analysis
 - 1 credit semester course Directed by Dr. Kathleen Torkko
 - A biostats course that was turned into a full semester long biostats course
- Animal Models in Cancer
- Tumor Microenvironment
- Current topics in Translational Research
- Pediatric Oncology (2023)



8. We give back to our community

- Brent's Place – Block Party Planning Committee
 - Plan yearly fundraising event for organization that provides clean, safe housing for children and adults undergoing immunosuppressive treatments
- Project Bridge
 - Focuses on scientific communication and contacting/educated elected officials about scientific issues
- Girl Scout STEM day

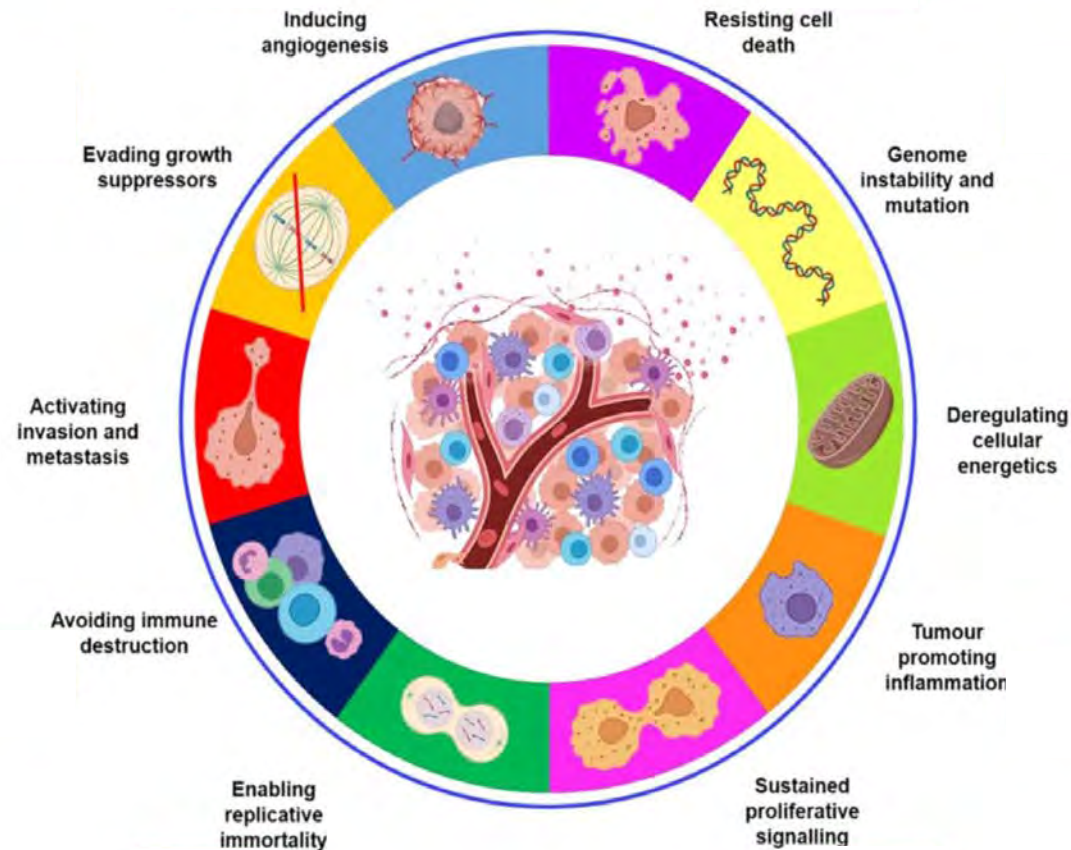


9. CANB Graduates are highly competitive for a wide variety of scientific jobs

- Postdocs at top tier institutions
 - NCI Medical Centers, St. Jude Children's Hospital, Huntsman Cancer Institute, NIDCR, Duke University, and more!
- Academic faculty in pharmaceutical and biotech companies
 - Roche Biotechnology, BioFire Diagnostics, ChromaDex, Sartorius
- Medical Science Liaison
 - Kardis Pharma
- Scientific writing and editing



10. We study diverse topics in basic and translational biology



Molecular and Cell biology

- Proliferation
- Apoptosis, senescence
- Migration, invasion

Pharmacology

Immunology

Tumor microenvironment

Big Data/Bioinformatics