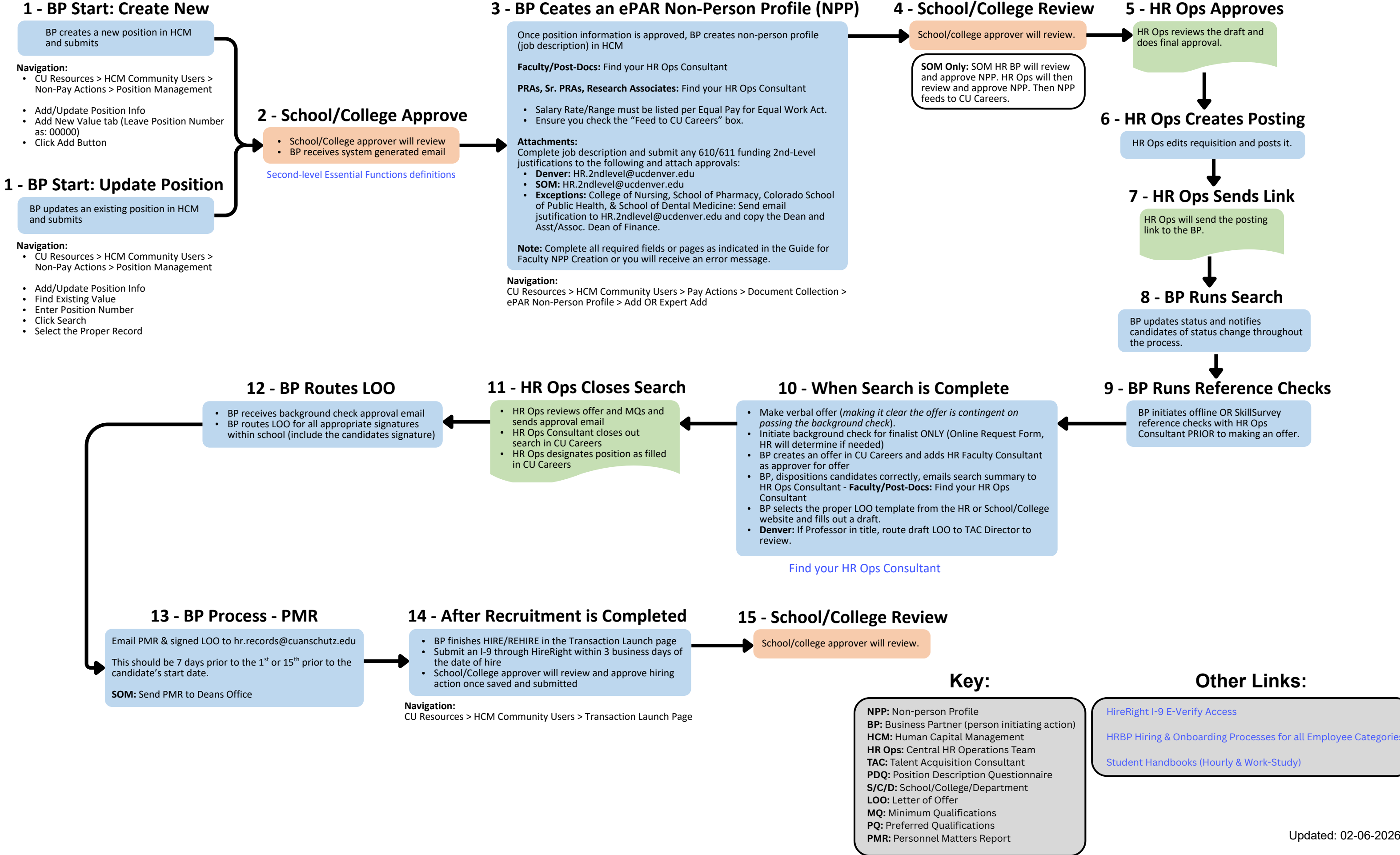
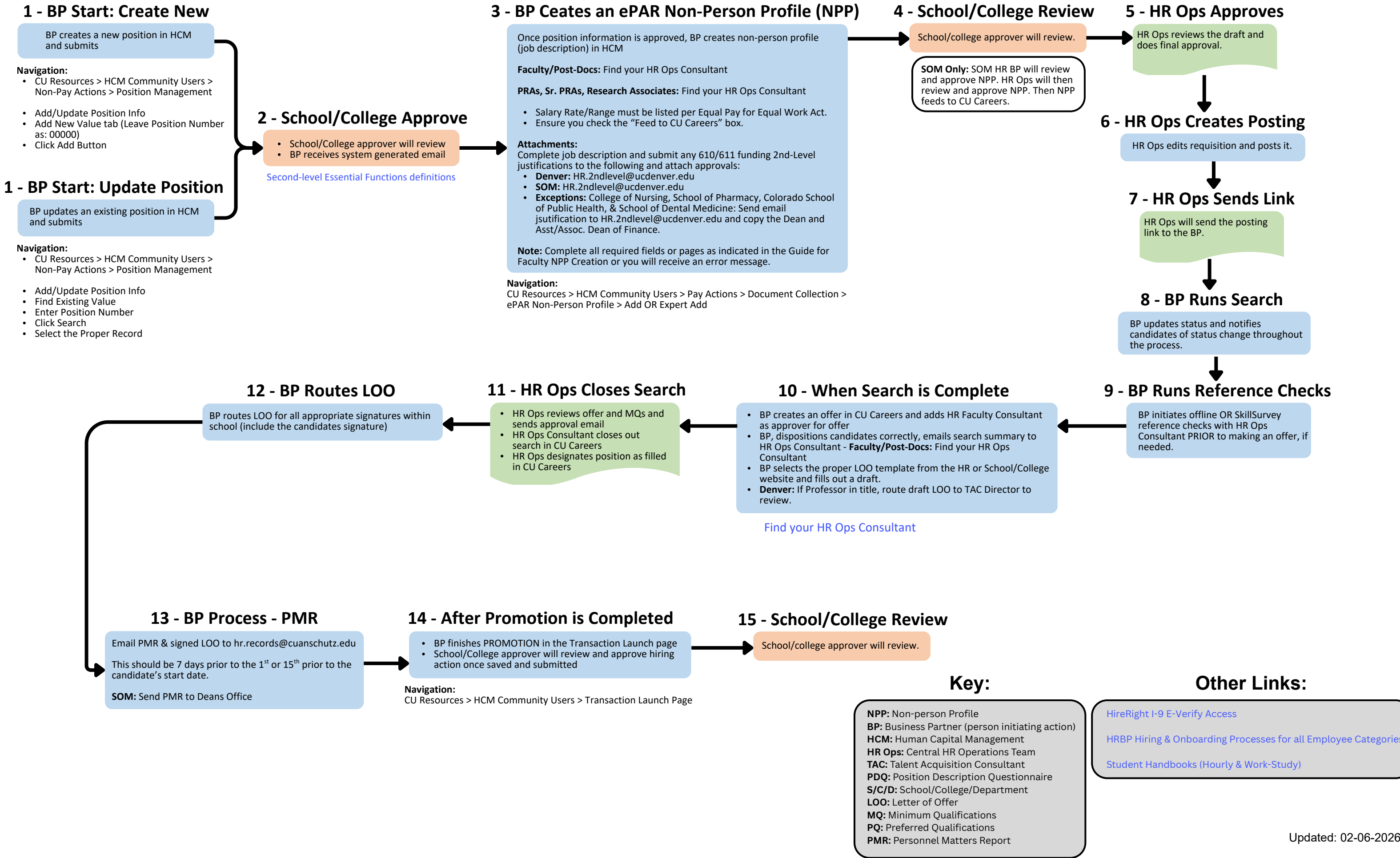


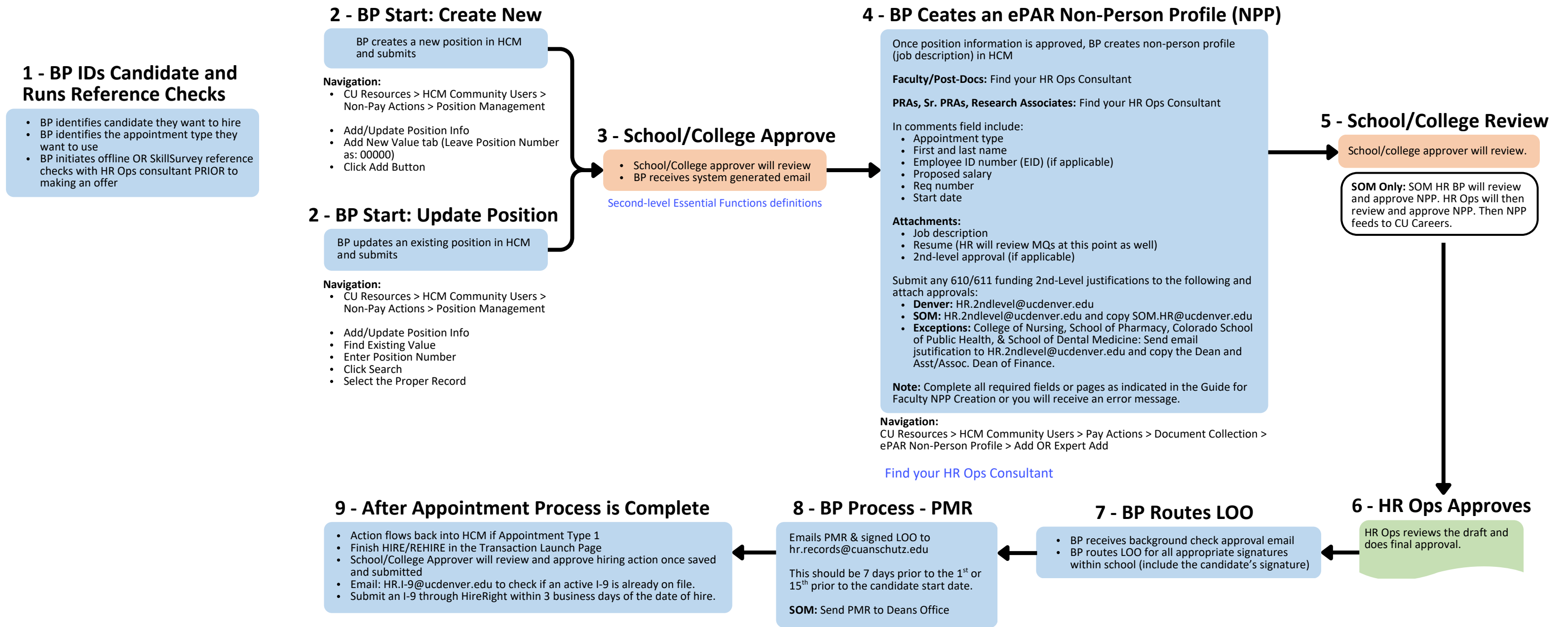
# Faculty – (1100- 1400 Job Code Series)- Begin Search



# Faculty – (1100- 1400 Job Code Series)- Promotion (with search)



# Faculty (1100 – 1400 Job Code Series, excluding Professor Emeritus) – Appoint non-CU employee who qualifies based on previous search



## Key:

**NPP:** Non-person Profile  
**BP:** Business Partner (person initiating action)  
**HCM:** Human Capital Management  
**HR Ops:** Central HR Operations Team  
**TAC:** Talent Acquisition Consultant  
**PDQ:** Position Description Questionnaire  
**S/C/D:** School/College/Department  
**LOO:** Letter of Offer  
**MQ:** Minimum Qualifications  
**PQ:** Preferred Qualifications  
**PMR:** Personnel Matters Report

## Other Links:

[HireRight I-9 E-Verify Access](#)  
[HRBP Hiring & Onboarding Processes for all Employee Categories](#)  
[Student Handbooks \(Hourly & Work-Study\)](#)