



## **Climate Action Plan Town Hall #2**

26 March 2025

# Welcome + Introductions







Anschutz  
HEALTH SCIENCES BUILDING



CANNONDESIGN



# Your Facilitators



**Eric Corey Freed**

Principal  
Director of Sustainability

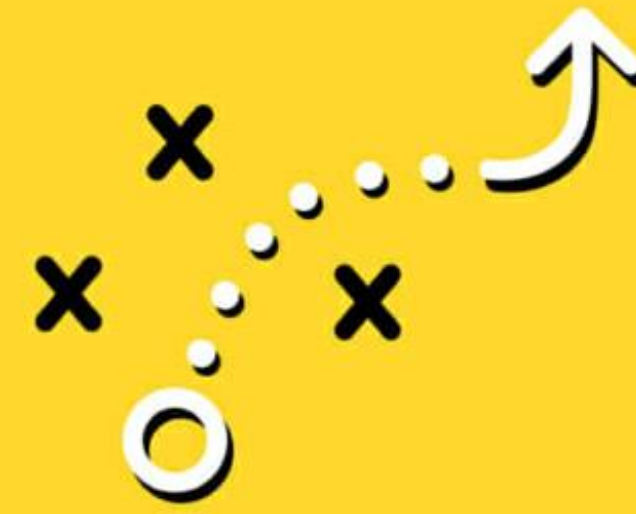
[ECFreed@CannonDesign.com](mailto:ECFreed@CannonDesign.com)



**Deb Favaretto**

Vice President  
Sustainability

[DFavaretto@CannonDesign.com](mailto:DFavaretto@CannonDesign.com)



# RULES OF ENGAGEMENT

BE PRESENT

JUST ASK

BE KIND

STAY  
FOCUSED

BE AWARE

STAY ON  
TRACK

HAVE FUN









Comfort  
Zone



Where the  
magic happens













REC







# What we will cover **today.**

**Context**

---

**Impact & Urgency Exercise**

---

**Sustainability & Health Exercise**

---

**Wrap Up**

---



You were invited

**We need your voice...**





Which one best describes you?

Answer in  
PollEV



Student



Faculty



Staff



Administration



Sustainability Council /  
Implementation Team



Researchers





# MISSING PERSON



## HAVE YOU SEEN THIS MAN?

Missing man of caucasian outsideness. He left his home at work and never returned.

Last seen on April 2 in the main street of the city.

Age 51 years, height 5 ft. 2 inches. Anyone who saw him , please  
inform the local police station

**PLEASE - INFORMATION NEEDED**

**REWARD**  
for information

Who's  
**NOT** here  
but  
should be?





# Context





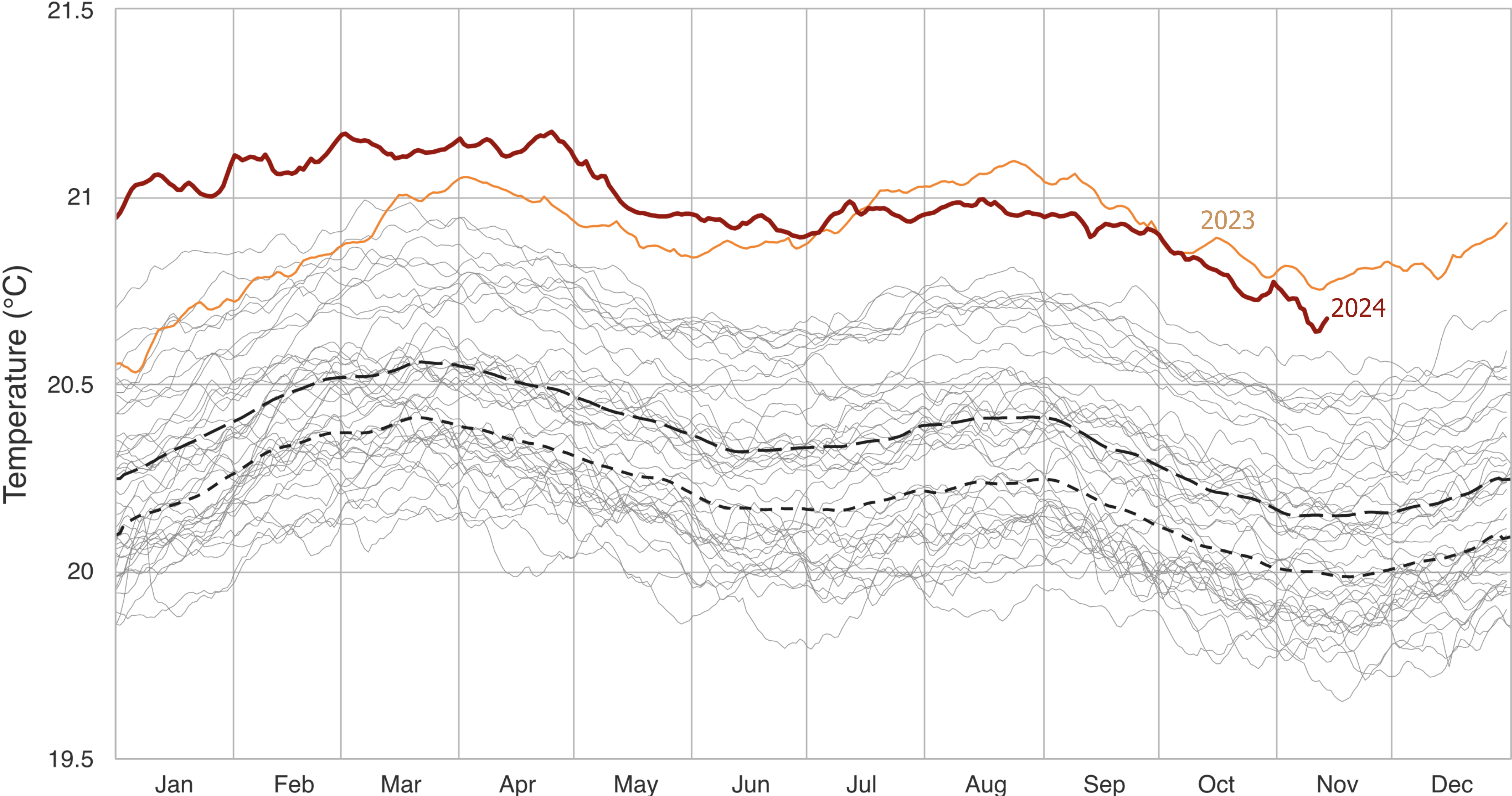


You've just lived  
through Earth's hottest  
12 months on record



# Daily Sea Surface Temperature, World (60°S–60°N, 0–360°E)

Dataset: NOAA OISST V2.1 | Image Credit: ClimateReanalyzer.org, Climate Change Institute, University of Maine





Global carbon dioxide levels as of ...

340 parts per million

1979

Jan. 1979



Source: National Oceanic and Atmospheric Administration's [Global Monitoring Laboratory](#) • The chart shows monthly numbers of carbon dioxide molecules per million molecules of dry air. Because of seasonal differences, levels are higher in May than in August.

**STOP**  
**burning stuff!**





MAR 05, 2024

# The Hidden Health Costs of Climate Change

TIME





CHEYENNE

UTAH

Grand Junction

Fort Collins  
Greeley

Boulder

DENVER

COLORADO

Colorado Springs

Pueblo

KANSAS

ARIZONA





**BUILDING PERFORMANCE STANDARDS  
AGGRESSIVE GHG EMISSIONS TARGETS**



**DEDICATED TO ITS SUSTAINABILITY RESOLUTION  
LEED BUILDING STANDARDS  
CLIMATE COMMITMENTS WITH ACUPCC  
ENERGY MASTER PLAN  
CLIMATE ACTION PLAN**



# The Energy Master Plan has been published.

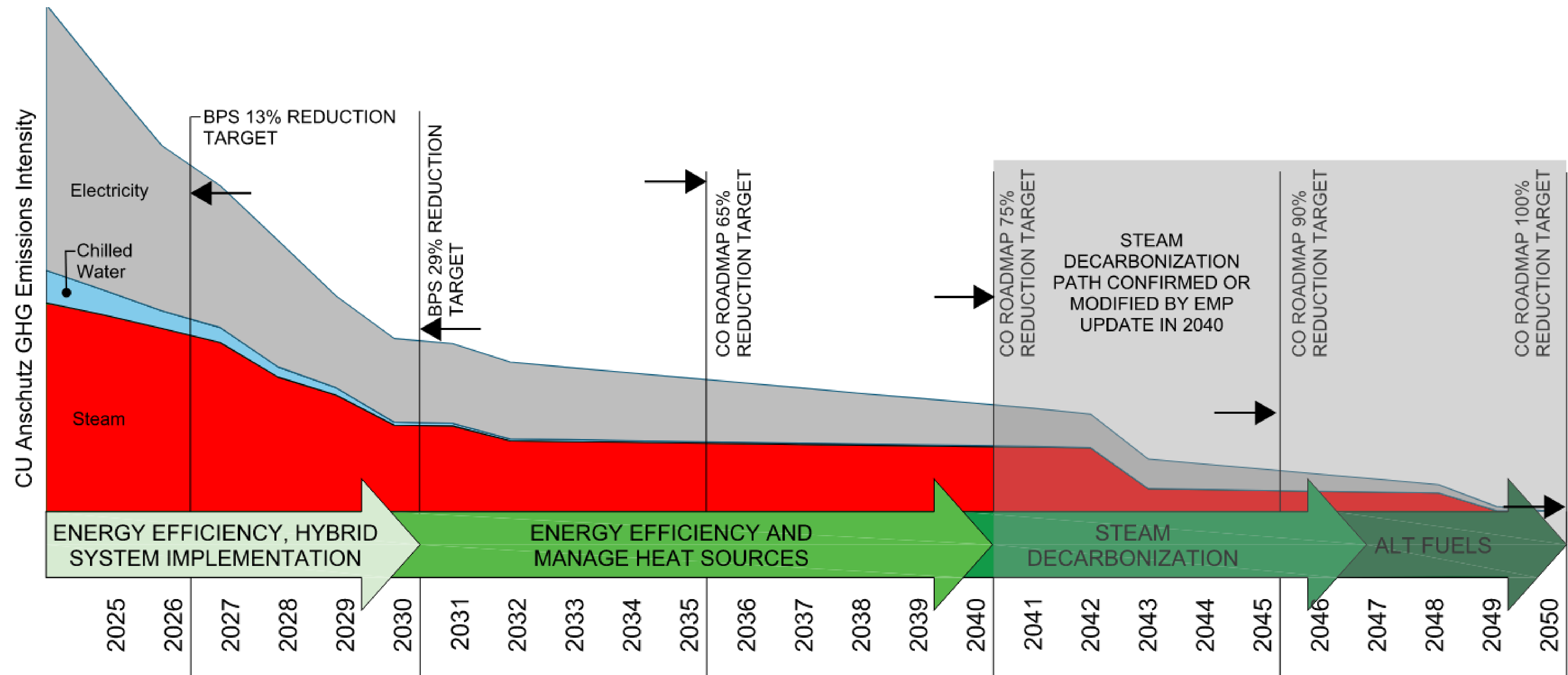
## Anschutz Medical Campus 2024 Energy Master Plan

JANUARY 2025





# Summary of the EMP Roadmap.





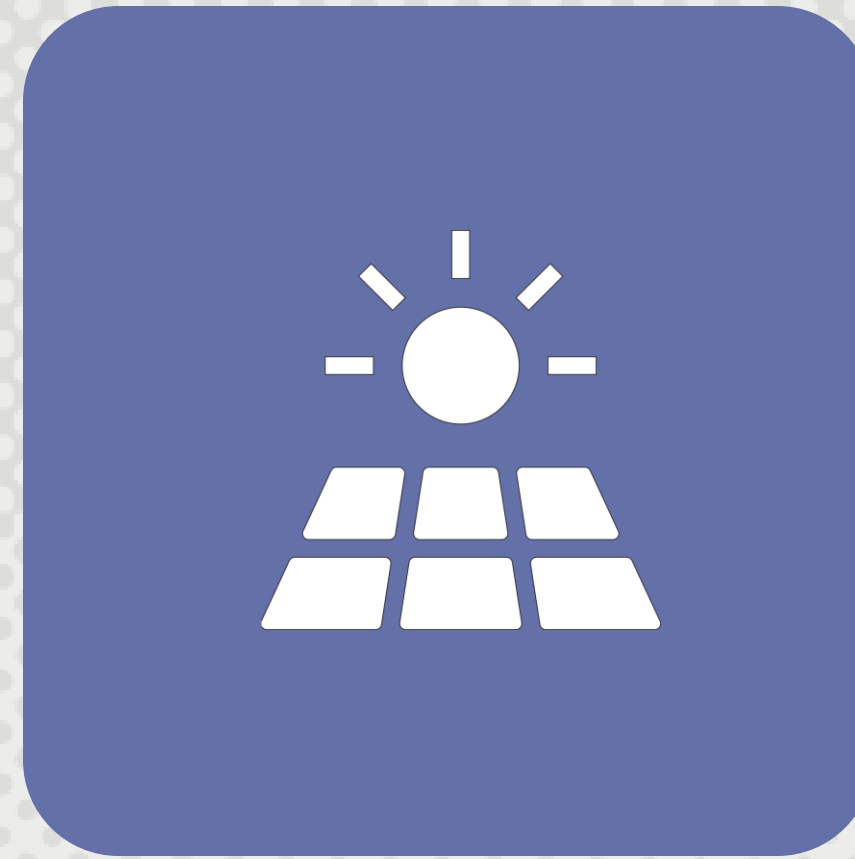
# Summary of the EMP Roadmap.



**REDUCE BUILDING  
ENERGY CONSUMPTION**



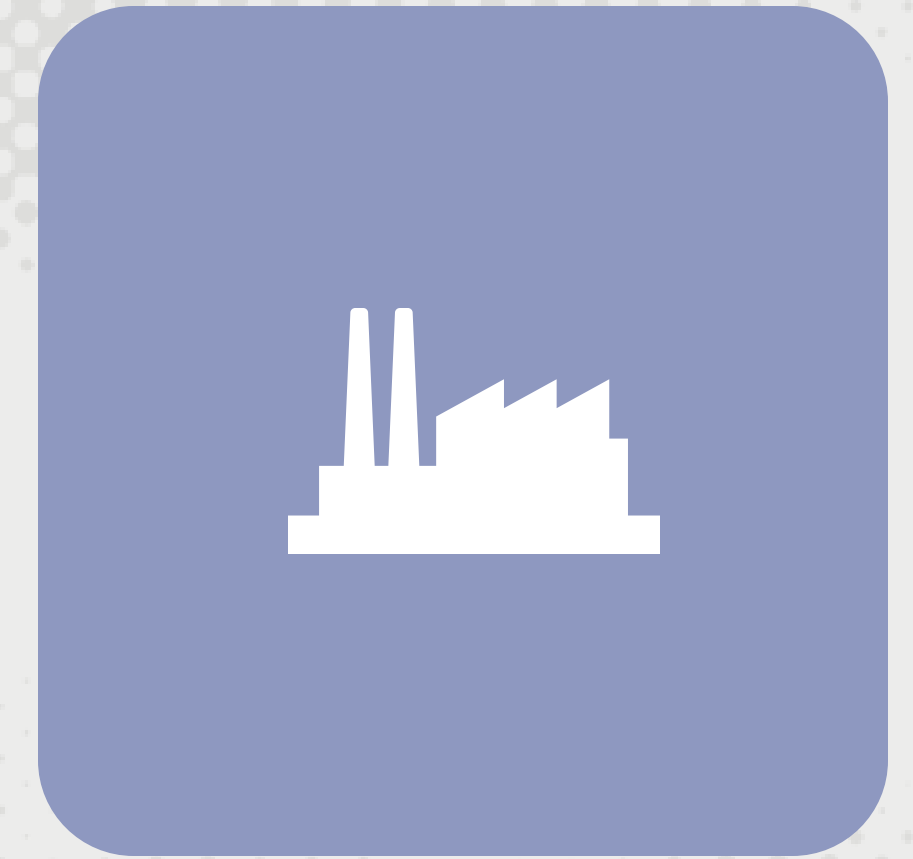
**EMPLOY HEAT PUMPS**



**RELY ON XCEL ENERGY'S  
GREENING OF THE GRID**



**MINIMIZE ELECTRICAL  
DEMAND**



**REDUCE STEAM  
GENERATION EMISSIONS**



Energy Master Plan

Climate Action Plan



Scope 1

Owned or controlled by the company

Scope 2

Purchased electricity, steam, heating, and cooling for use in business operations

Scope 3

Not owned or controlled by the company. Typically, a result of supplier or consumer activities





## Scope 1

Owned or controlled by the company

### Stationary Combustion

Physical or chemical processing  
Company Owned Fleets  
Fugitive Emissions



## Scope 2

Purchased electricity, steam, heating, and cooling for use in business operations

### Purchased Electricity

Off-Site 3<sup>rd</sup> Party Supplier of heat / steam / cooling



## Scope 3

Not owned or controlled by the company. Typically, a result of supplier or consumer activities

### 1. Purchased goods and services

### 2. Capital goods

3. Fuel- and energy-related activities (not included in scope 1 or scope 2)

4. Upstream transportation and distribution

### 5. Waste generated in operations

### 6. Business travel

### 7. Employee commuting

8. Upstream leased assets

9. Downstream transportation and distribution

10. Processing of sold products

11. Use of sold products

12. End-of-life treatment of sold products

13. Downstream leased assets

14. Franchises

15. Investments



# The Climate Action Plan development timeline.

Dates	Activities
Sep 19	Town Hall #1
Nov 18	Stakeholder Workshop #1
Jan 16	Stakeholder Workshop #2
<b>Mar 26</b>	<b>Town Hall #2</b>
May 1 +/-	Stakeholder Workshop #3
May 15	Issue Draft Report for CU Review
Jun 26 +/-	Town Hall #3
Jul 31	Issue Final Report





# Scope 3 Emissions Equivalents

JAN – DEC 2023

## Business Travel

22,733 MtCO<sub>2</sub>e

8,119

## Purchasing

22,020 MtCO<sub>2</sub>e

7,864

## Commuting

10,915 MtCO<sub>2</sub>e\*

3,900

## Waste

1,150 MtCO<sub>2</sub>e\*

410

Flights  
to  
London  
and  
back



# Our Carbon Footprint Dashboard

## Sustainability

## Facilities Management

## Learn about Our Campus Stormwater Program

[Climate Action](#) ▾
 [Good Housekeeping](#) ▾
 [Green Labs Program](#)
[PSSC](#)
[Stormwater](#) ▾
 [Waste Diversion](#)
[News](#)

Sustainability > Climate Action > Emissions

## Contact Us

### Sustainability Questions, Concerns, Ideas?

**Contact:**

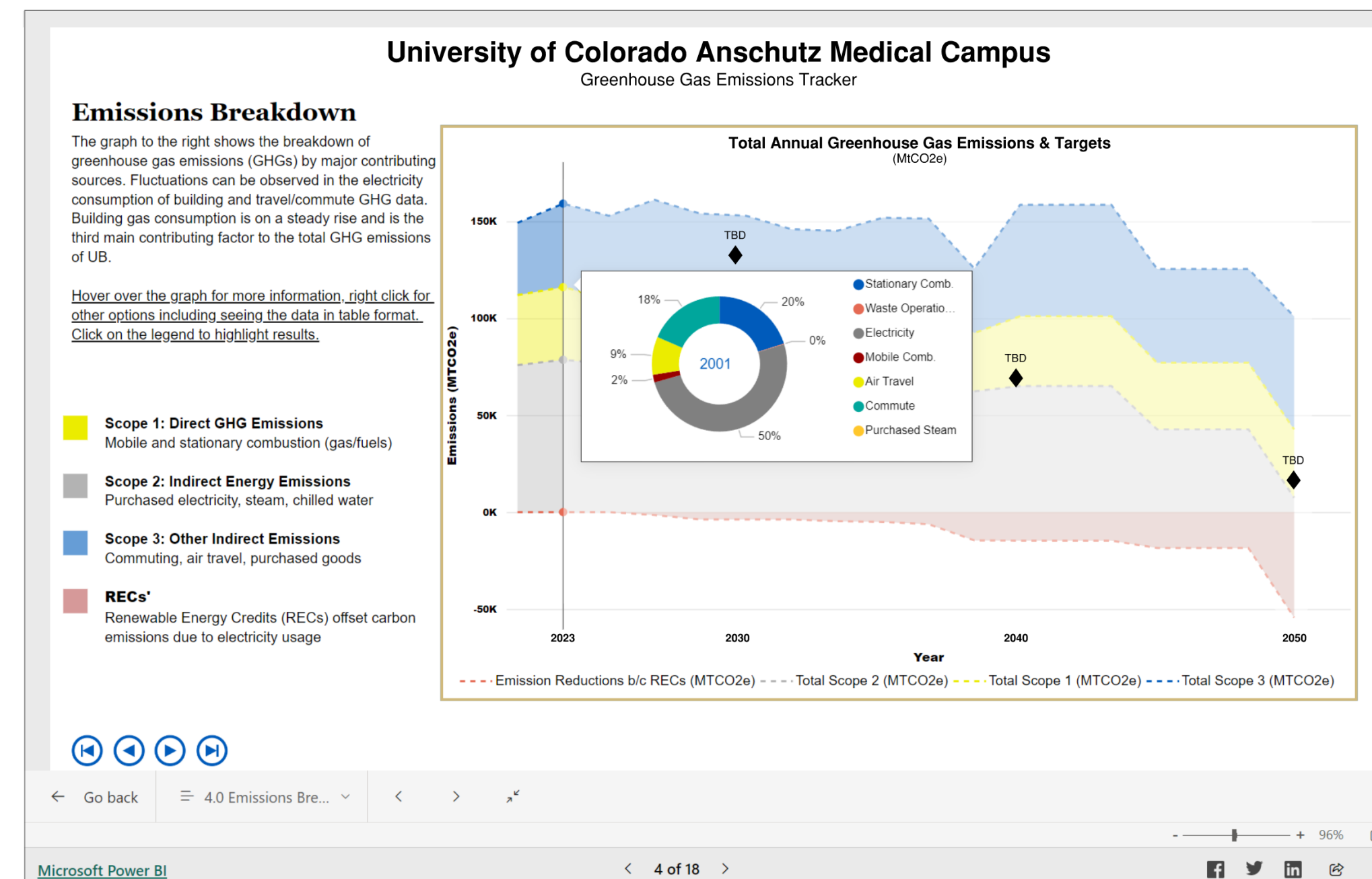
Jarrett Smith

## Sustainability Manager

[Jarrett.Smith@cuanschutz.edu](mailto:Jarrett.Smith@cuanschutz.edu)

## Our Carbon Footprint

At CU Anschutz Medical Campus, we've been measuring our greenhouse gas emissions from our buildings for the past two decades, continuously improving our methods to capture a more comprehensive view of our environmental impact. Now we've started tracking our supply chain (Scope 3) emissions like commuting, purchased goods and services, capital goods, and waste.





# Impact & Urgency Exercise

*Identifying Top Priorities*







Commuting:

Which are the **3 most impactful** initiatives that should be done **ASAP**?

---

---

---





Commuting:

What's **missing**?

---

---

---

---





**Business Travel:**

Which are the **3 most impactful** initiatives that should be done **ASAP**?

---

---

---





Business Travel:

What's **missing**?

---

---

---

---

---





**Waste:**

Which are the **3 most impactful** initiatives that should be done **ASAP**?

---

---

---





**Waste:**

What's **missing?**

---

---

---

---

---





Campus Culture:

Which are the **3 most impactful** initiatives that should be done **ASAP**?

---

---

---





Campus Culture:

What's **missing**?

---

---

---

---





Purchasing:

Which are the **3 most impactful** initiatives that should be done **ASAP**?

---

---

---





Purchasing:

What's **missing**?

---

---

---

---





**Water:**

Which are the **3 most impactful** initiatives that should be done **ASAP**?

---

---

---





Water:

What's **missing**?

---

---

---

---





Curriculum:

Which are the **3 most impactful** initiatives that should be done **ASAP**?

---

---

---





Curriculum:

What's **missing**?

---

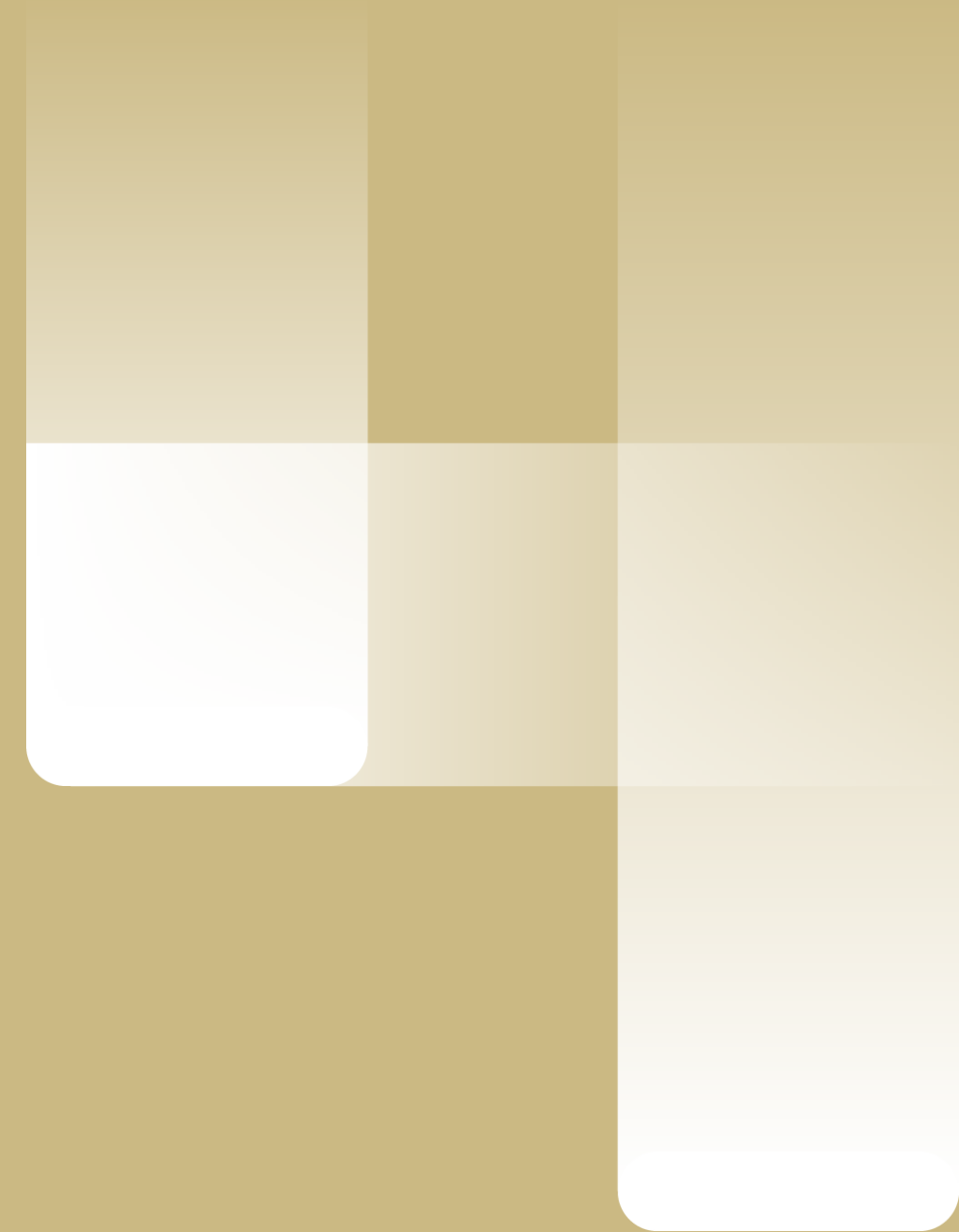
---

---

---



# Sustainability & Health Exercise







Question:

What are **human health risks** associated with climate change that may impact your campus community?

---

---

---





Question:

How do you think **sustainable practices** can be made more engaging to the campus community?

---

---

---

---





Question:

How do you think **sustainable practices** can be made more engaging to the surrounding community?

---

---

---

---



# Wrap Up







what's  
missing?





Wrap Up:

How did **we do** today?

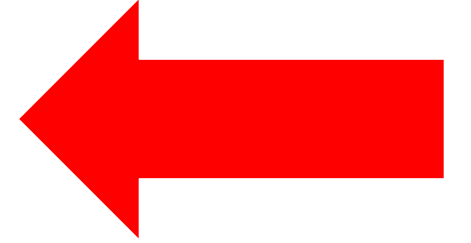




# Sustainability

Facilities Management

Share your sustainability  
ideas with us



Climate Action Plan

Energy Master Plan

Green Labs Program

Waste Diversion

Transportation

Stormwater

News

Sustainability



## Contact Us

Jarrett Smith  
Sustainability Manager  
[Jarrett.Smith@cuanschutz.edu](mailto:Jarrett.Smith@cuanschutz.edu)

Julianna Nienart  
Sustainability Resources & Waste  
Diversion Coordinator  
[Julianna.Nienart@cuanschutz.edu](mailto:Julianna.Nienart@cuanschutz.edu)

Derek Cooper  
Green Labs Coordinator  
[Derek.Cooper@cuanschutz.edu](mailto:Derek.Cooper@cuanschutz.edu)

Caleb Yoder  
Student Research Assistant  
[Caleb.Yoder@cuanschutz.edu](mailto:Caleb.Yoder@cuanschutz.edu)



## CAMPUS SUSTAINABILITY

University of Colorado's Anschutz Medical Campus has a mission to improve humanity by preventing illness, saving lives, educating health professionals and scientists, advancing science, and serving our communities. Sustainability and human health are inextricably linked, so Anschutz Medical Campus has set stringent and impactful goals to reduce our ecological footprint. The campus's efforts are centered on achieving Net Zero by 2050. In working towards carbon neutrality, the campus is developing two stringent strategies: the Energy Master Plan (EMP) and the Climate Action Plan (CAP).

Sign Up for The Sustainability Scoop Newsletter



Together, we're building a brighter  
and more sustainable world.



**Thanks for being  
part of the journey.**